

# **J.E. ADAMS INDUSTRIES**

## **OWNERS MANUAL**

### **VACUUMS AIR/VACUUMS AIR/WATER/VACUUMS**

## ***TABLE OF CONTENTS***

<b>PAGE 1-3</b>	<b>SPECIFICATIONS</b>
-----------------	-----------------------

<b>PAGE 4-6</b>	<b>INSTALLATION</b>
-----------------	---------------------

<b>PAGE 7-10</b>	<b>WIRE DIAGRAMS</b>
------------------	----------------------

<b>PAGE 11</b>	<b>TIMER INFORMATION</b>
----------------	--------------------------

<b>PAGE 12-16</b>	<b>DRAWINGS &amp; PART NUMBERS</b>
-------------------	------------------------------------

<b>PAGE 17</b>	<b>TROUBLESHOOTING</b>
----------------	------------------------

<b>PAGE 17</b>	<b>MAINTENANCE</b>
----------------	--------------------

## **110V SPECIFICATIONS**

HEIGHT: 54-1/2"  
CANISTER DIAMETER: 19"  
DOME DIAMETER: 24"  
TOTAL DEPTH -  
REAR OF DOME TO  
FRONT OF LOCK BOX: 29"  
WEIGHT: 140 LB.

**VACUUM:**

110 VOLTS, (2 MOTOR VACS 20AMP SERVICE RECOMMENDED)  
(3 MOTOR VACS 30 AMP SERVICE RECOMMENDED)

188 CFM  
2 FILTER BAGS (8072)

**MOTORS:**

AMETEK UNIVERSAL TYPE, 50/60HZ  
2 STAGE PERIPHERAL BYPASS DISCHARGE  
UL RECOGNIZED CATEGORY  
PRGY2(E47185)  
CSA CERTIFIED, CLASS 1611 01(LR31393)

### ***SINGLE DOOR VACUUMS***

HEIGHT: 54-1/2"  
CANISTER DIAMETER: 19"  
DOME DIAMETER: 24"  
TOTAL DEPTH -  
REAR OF DOME TO  
FRONT OF LOCK BOX: 29"  
WEIGHT: 150 LB.

**VACUUM:**

110 VOLTS, (2 MOTOR VACS 20AMP SERVICE RECOMMENDED)  
(3 MOTOR VACS 30 AMP SERVICE RECOMMENDED)

188 CFM  
4 FILTER BAGS (8076)

**MOTORS:**

AMETEK UNIVERSAL TYPE, 50/60HZ  
2 STAGE PERIPHERAL BYPASS DISCHARGE  
UL RECOGNIZED CATEGORY  
PRGY2(E47185)  
CSA CERTIFIED, CLASS 1611 01(LR31393)

### ***2 DOOR VACUUMS***

HEIGHT: 54-1/2"  
CANISTER DIAMETER: 19"  
DOME DIAMETER: 24"  
TOTAL DEPTH -  
REAR OF DOME TO  
FRONT OF LOCK BOX: 26"  
WEIGHT: 140 LB.

**VACUUM:**

110 VOLTS, (2 MOTOR VACS 20AMP SERVICE RECOMMENDED)  
(3 MOTOR VACS 30 AMP SERVICE RECOMMENDED)

188 CFM  
2 FILTER BAGS (8072)

**MOTORS:**

AMETEK UNIVERSAL TYPE, 50/60HZ  
2 STAGE PERIPHERAL BYPASS DISCHARGE  
UL RECOGNIZED CATEGORY  
PRGY2(E47185)  
CSA CERTIFIED, CLASS 1611 01(LR31393)

### ***COMMERCIAL SINGLE DOOR VACUUMS***

HEIGHT: 54-1/2"  
CANISTER DIAMETER: 19"  
DOME DIAMETER: 24"  
TOTAL DEPTH -  
REAR OF DOME TO  
FRONT OF LOCK BOX: 29"  
WEIGHT: 140 LB.

**VACUUM:**

110 VOLTS, (2 MOTOR VACS 20AMP SERVICE RECOMMENDED)  
(3 MOTOR VACS 30 AMP SERVICE RECOMMENDED)

188 CFM  
4 FILTER BAGS (8076)

**MOTORS:**

AMETEK UNIVERSAL TYPE, 50/60HZ  
2 STAGE PERIPHERAL BYPASS DISCHARGE  
UL RECOGNIZED CATEGORY  
PRGY2(E47185)  
CSA CERTIFIED, CLASS 1611 01(LR31393)

### ***COMMERCIAL 2 DOOR VACUUMS***

HEIGHT: 61"  
CANISTER DIMS: 15.98" x 26.28"  
DOME DIMS: 19.9" x 30"  
TOTAL DEPTH -  
REAR OF DOME TO  
FRONT OF LOCK BOX: 35"  
WEIGHT: 223 LB.

**VACUUM:**

110 VOLTS, (2 MOTOR VACS 20 AMP SERVICE RECOMMENDED)  
(3 MOTOR VACS 30 AMP SERVICE RECOMMENDED)

188 CFM  
2 OR 3 FILTER BAGS (8072)

**MOTORS:**

AMETEK UNIVERSAL TYPE, 50/60HZ  
2 STAGE PERIPHERAL BYPASS DISCHARGE  
UL RECOGNIZED CATEGORY  
PRGY2(E47185)  
CSA CERTIFIED, CLASS 1611 01(LR31393)

### ***OVAL VACUUMS***

HEIGHT: 59"  
CANISTER DIMS: 15.60" x 26.12"  
DOME DIMS: 19.9" x 30"  
TOTAL DEPTH -  
FACE TO FACE: 37"  
WEIGHT: 215 LB.

**VACUUM:**

110 VOLTS, (2 SEPARATE 20 AMPS SERVICE RECOMMENDED)

188 CFM  
4 FILTER BAGS (8076)

**MOTORS:**

AMETEK UNIVERSAL TYPE, 50/60HZ  
2 STAGE PERIPHERAL BYPASS DISCHARGE  
UL RECOGNIZED CATEGORY  
PRGY2(E47185)  
CSA CERTIFIED, CLASS 1611 01(LR31393)

### ***DUAL VACUUMS***

HEIGHT: 54-1/2"  
CANISTER DIMS: 19"  
DOME DIMS: 19.9" x 30"  
TOTAL DEPTH -  
REAR OF DOME TO  
FRONT OF LOCK BOX: 29"  
WEIGHT: 206 LB.

**VACUUM:**

110 VOLTS, (2 SEPARATE 20 AMPS SERVICE RECOMMENDED)

188 CFM  
2 FILTER BAGS (8072)

**MOTORS:**

AMETEK UNIVERSAL TYPE, 50/60HZ  
2 STAGE PERIPHERAL BYPASS DISCHARGE  
UL RECOGNIZED CATEGORY  
PRGY2(E47185)  
CSA CERTIFIED, CLASS 1611 01(LR31393)

**AIR COMPRESSOR:**

110V / 60HZ / 10.6 AMPS

¾ HP / ONE CYLINDER / ONE STAGE OIL-LESS

SCFM @ PSI

3.78 @ 0  
3.43 @ 20  
3.04 @ 40  
2.14 @ 90  
1.99 @ 100

### ***SINGLE DOOR AIR / VACUUMS WITH THOMAS***

HEIGHT: 54-1/2"  
CANISTER DIMS: 19"  
DOME DIMS: 19.9" x 30"  
TOTAL DEPTH -  
REAR OF DOME TO  
FRONT OF LOCK BOX: 29"  
WEIGHT: 206 LB.

**VACUUM:**

110 VOLTS, (2 SEPARATE 20 AMPS SERVICE RECOMMENDED)

188 CFM  
2 FILTER BAGS (8072)

**MOTORS:**

AMETEK UNIVERSAL TYPE, 50/60HZ  
2 STAGE PERIPHERAL BYPASS DISCHARGE  
UL RECOGNIZED CATEGORY  
PRGY2(E47185)  
CSA CERTIFIED, CLASS 1611 01(LR31393)

**AIR COMPRESSOR:**

110V / 60HZ / 14 AMPS

1.5 HP / ONE CYLINDER / ONE STAGE OIL-LESS

SCFM @ PSI

6 @ 0  
5 @ 20  
4.1 @ 40  
3.1 @ 90  
2.9 @ 100  
2.1 @ 125 (MAX PSI)

### ***SINGLE DOOR AIR / VACUUMS WITH DEVILBISS***

HEIGHT: 54-1/2"  
CANISTER DIMS: 19"  
DOME DIMS: 19.9" x 30"  
TOTAL DEPTH -  
REAR OF DOME TO  
FRONT OF LOCK BOX: 29"  
WEIGHT: 206 LB.

**2 DOOR AIR /  
VACUUMS  
WITH THOMAS**

VACUUM:  
110 VOLTS, (2 SEPARATE 20 AMPS SERVICE RECOMMENDED)  
188 CFM  
4 FILTER BAGS (8076)  
MOTORS:  
AMETEK UNIVERSAL TYPE, 50/60HZ  
2 STAGE PERIPHERAL BYPASS DISCHARGE  
UL RECOGNIZED CATEGORY  
PRGY2(E47185)  
CSA CERTIFIED, CLASS 1611 01(LR31393)  
AIR COMPRESSOR:  
110V / 60HZ / 10.6 AMPS  
¾ HP / ONE CYLINDER / ONE STAGE OIL-LESS  
SCFM @ PSI  
3.78 @ 0  
3.43 @ 20  
3.04 @ 40  
2.14 @ 90  
1.99 @ 100

HEIGHT: 54-1/2"  
CANISTER DIMS: 19"  
DOME DIMS: 19.9" x 30"  
TOTAL DEPTH -  
REAR OF DOME TO  
FRONT OF LOCK BOX: 29"  
WEIGHT: 206 LB.

**2 DOOR AIR /  
VACUUMS  
WITH DEVILBISS**

VACUUM:  
110 VOLTS, (2 SEPARATE 20 AMPS SERVICE RECOMMENDED)  
188 CFM  
4 FILTER BAGS (8076)  
MOTORS:  
AMETEK UNIVERSAL TYPE, 50/60HZ  
2 STAGE PERIPHERAL BYPASS DISCHARGE  
UL RECOGNIZED CATEGORY  
PRGY2(E47185)  
CSA CERTIFIED, CLASS 1611 01(LR31393)  
AIR COMPRESSOR:  
110V / 60HZ / 14 AMPS  
1.5 HP / ONE CYLINDER / ONE STAGE OIL-LESS  
SCFM @ PSI  
6 @ 0  
5 @ 20  
4.1 @ 40  
3.1 @ 90  
2.9 @ 100  
2.1 @ 125 (MAX PSI)

HEIGHT: 54-1/2"  
CANISTER DIMS: 19"  
DOME DIMS: 19.9" x 30"  
TOTAL DEPTH -  
REAR OF DOME TO  
FRONT OF LOCK BOX: 29"  
WEIGHT: 206 LB.

**1 DOOR AIR /  
WATER / VACUUMS  
WITH THOMAS**

VACUUM:  
110 VOLTS, (2 SEPARATE 20 AMPS SERVICE RECOMMENDED)  
188 CFM  
4 FILTER BAGS (8076)  
MOTORS:  
AMETEK UNIVERSAL TYPE, 50/60HZ  
2 STAGE PERIPHERAL BYPASS DISCHARGE  
UL RECOGNIZED CATEGORY  
PRGY2(E47185)  
CSA CERTIFIED, CLASS 1611 01(LR31393)  
AIR COMPRESSOR:  
110V / 60HZ / 10.6 AMPS  
¾ HP / ONE CYLINDER / ONE STAGE OIL-LESS  
SCFM @ PSI  
3.78 @ 0  
3.43 @ 20  
3.04 @ 40  
2.14 @ 90  
1.99 @ 100

HEIGHT: 54-1/2"  
CANISTER DIMS: 19"  
DOME DIMS: 19.9" x 30"  
TOTAL DEPTH -  
REAR OF DOME TO  
FRONT OF LOCK BOX: 29"  
WEIGHT: 206 LB.

**1 DOOR AIR /  
WATER / VACUUMS  
WITH DEVILBISS**

VACUUM:  
110 VOLTS, (2 SEPARATE 20 AMPS SERVICE RECOMMENDED)  
188 CFM  
4 FILTER BAGS (8076)  
MOTORS:  
AMETEK UNIVERSAL TYPE, 50/60HZ  
2 STAGE PERIPHERAL BYPASS DISCHARGE  
UL RECOGNIZED CATEGORY  
PRGY2(E47185)  
CSA CERTIFIED, CLASS 1611 01(LR31393)  
AIR COMPRESSOR:  
110V / 60HZ / 14 AMPS  
1.5 HP / ONE CYLINDER / ONE STAGE OIL-LESS  
SCFM @ PSI  
6 @ 0  
5 @ 20  
4.1 @ 40  
3.1 @ 90  
2.9 @ 100  
2.1 @ 125 (MAX PSI)

## **220V SPECIFICATIONS**

HEIGHT: 54-1/2"  
CANISTER DIAMETER: 19"  
DOME DIAMETER: 24"  
TOTAL DEPTH -  
REAR OF DOME TO  
FRONT OF LOCK BOX: 29"  
WEIGHT: 140 LB.

**SINGLE DOOR  
VACUUMS**

VACUUM:  
220V / 60HZ, (2 MOTOR VACS 10 AMP SERVICE RECOMMENDED)  
(3 MOTOR VACS 15 AMP SERVICE RECOMMENDED)  
188 CFM  
2 FILTER BAGS (8072)  
MOTORS:  
AMETEK UNIVERSAL TYPE, 50/60HZ  
2 STAGE PERIPHERAL BYPASS DISCHARGE  
UL RECOGNIZED CATEGORY  
PRGY2(E47185)  
CSA CERTIFIED, CLASS 1611 01(LR31393)

HEIGHT: 54-1/2"  
CANISTER DIAMETER: 19"  
DOME DIAMETER: 24"  
TOTAL DEPTH -  
REAR OF DOME TO  
FRONT OF LOCK BOX: 29"  
WEIGHT: 150 LB.

**2 DOOR  
VACUUMS**

VACUUM:  
220V / 60HZ, (2 MOTOR VACS 10 AMP SERVICE RECOMMENDED)  
(3 MOTOR VACS 15 AMP SERVICE RECOMMENDED)  
188 CFM  
4 FILTER BAGS (8076)  
MOTORS:  
AMETEK UNIVERSAL TYPE, 50/60HZ  
2 STAGE PERIPHERAL BYPASS DISCHARGE  
UL RECOGNIZED CATEGORY  
PRGY2(E47185)  
CSA CERTIFIED, CLASS 1611 01(LR31393)

HEIGHT: 54-1/2"  
CANISTER DIAMETER: 19"  
DOME DIAMETER: 24"  
TOTAL DEPTH -  
REAR OF DOME TO  
FRONT OF LOCK BOX: 26"  
WEIGHT: 140 LB.

**COMMERCIAL  
SINGLE DOOR  
VACUUMS**

VACUUM:  
220V / 60HZ, (2 MOTOR VACS 10 AMP SERVICE RECOMMENDED)  
(3 MOTOR VACS 15 AMP SERVICE RECOMMENDED)  
188 CFM  
2 FILTER BAGS (8072)  
MOTORS:  
AMETEK UNIVERSAL TYPE, 50/60HZ  
2 STAGE PERIPHERAL BYPASS DISCHARGE  
UL RECOGNIZED CATEGORY  
PRGY2(E47185)  
CSA CERTIFIED, CLASS 1611 01(LR31393)

HEIGHT: 54-1/2"  
CANISTER DIAMETER: 19"  
DOME DIAMETER: 24"  
TOTAL DEPTH -  
REAR OF DOME TO  
FRONT OF LOCK BOX: 29"  
WEIGHT: 140 LB.

**COMMERCIAL  
2 DOOR  
VACUUMS**

VACUUM:  
220V / 60HZ, (2 MOTOR VACS 10 AMP SERVICE RECOMMENDED)  
(3 MOTOR VACS 15 AMP SERVICE RECOMMENDED)  
188 CFM  
4 FILTER BAGS (8076)  
MOTORS:  
AMETEK UNIVERSAL TYPE, 50/60HZ  
2 STAGE PERIPHERAL BYPASS DISCHARGE  
UL RECOGNIZED CATEGORY  
PRGY2(E47185)  
CSA CERTIFIED, CLASS 1611 01(LR31393)

HEIGHT: 61"  
CANISTER DIMS: 15.98" x 26.28"  
DOME DIMS: 19.9" x 30"  
TOTAL DEPTH -  
REAR OF DOME TO  
FRONT OF LOCK BOX: 35"  
WEIGHT: 223 LB.

**OVAL  
VACUUMS**

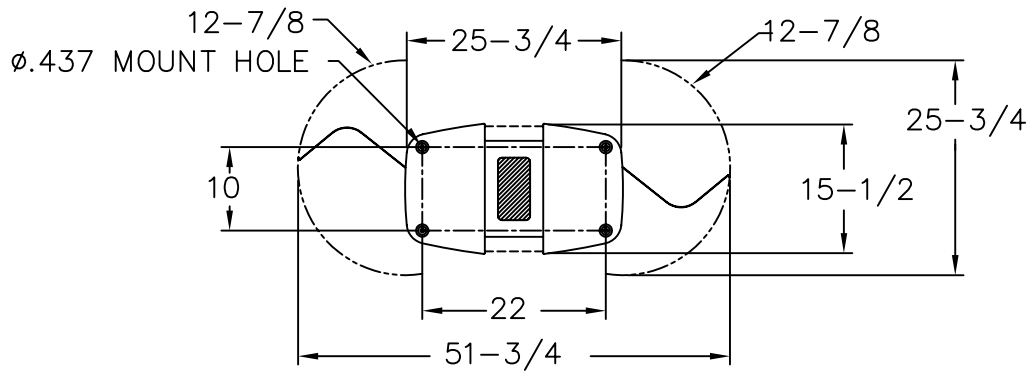
VACUUM:  
220V / 60HZ, (2 MOTOR VACS 10 AMP SERVICE RECOMMENDED)  
(3 MOTOR VACS 15 AMP SERVICE RECOMMENDED)  
188 CFM  
2 OR 3 FILTER BAGS (8072)  
MOTORS:  
AMETEK UNIVERSAL TYPE, 50/60HZ  
2 STAGE PERIPHERAL BYPASS DISCHARGE  
UL RECOGNIZED CATEGORY  
PRGY2(E47185)  
CSA CERTIFIED, CLASS 1611 01(LR31393)

HEIGHT: 59"  
CANISTER DIMS: 15.60" x 26.12"  
DOME DIMS: 19.9" x 30"  
TOTAL DEPTH -  
FACE TO FACE: 37"  
WEIGHT: 215 LB.

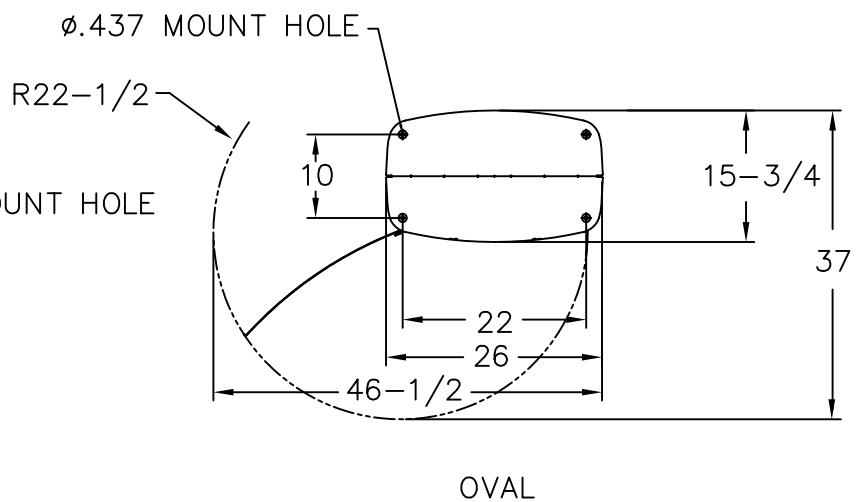
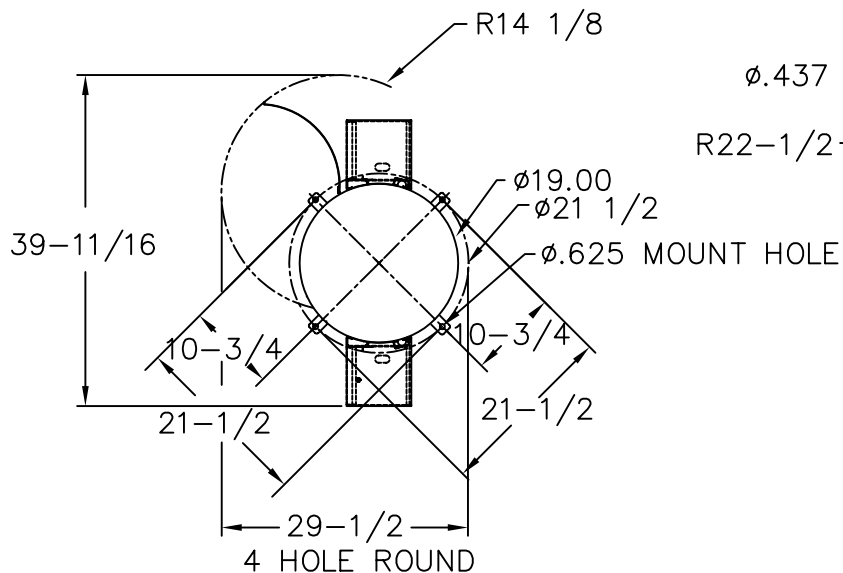
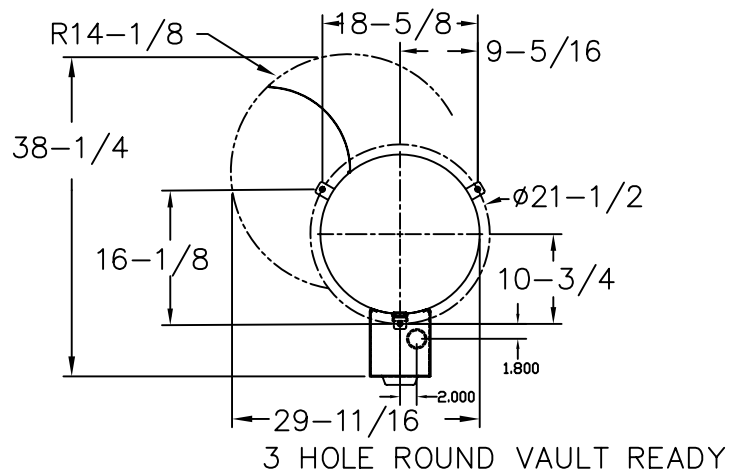
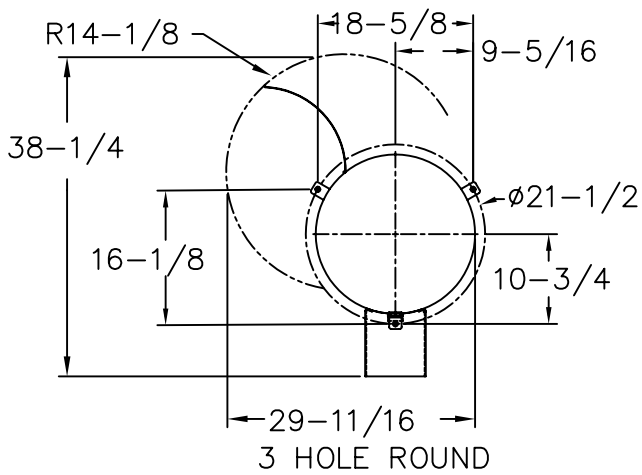
**DUAL  
VACUUMS**

VACUUM:  
220V / 60HZ, (2 SEPARATE 10 AMPS SERVICE RECOMMENDED)  
188 CFM  
4 FILTER BAGS (8076)  
MOTORS:  
AMETEK UNIVERSAL TYPE, 50/60HZ  
2 STAGE PERIPHERAL BYPASS DISCHARGE  
UL RECOGNIZED CATEGORY  
PRGY2(E47185)  
CSA CERTIFIED, CLASS 1611 01(LR31393)

# J.E. ADAMS VAC INSTALLATION 1 OF 3



DUAL

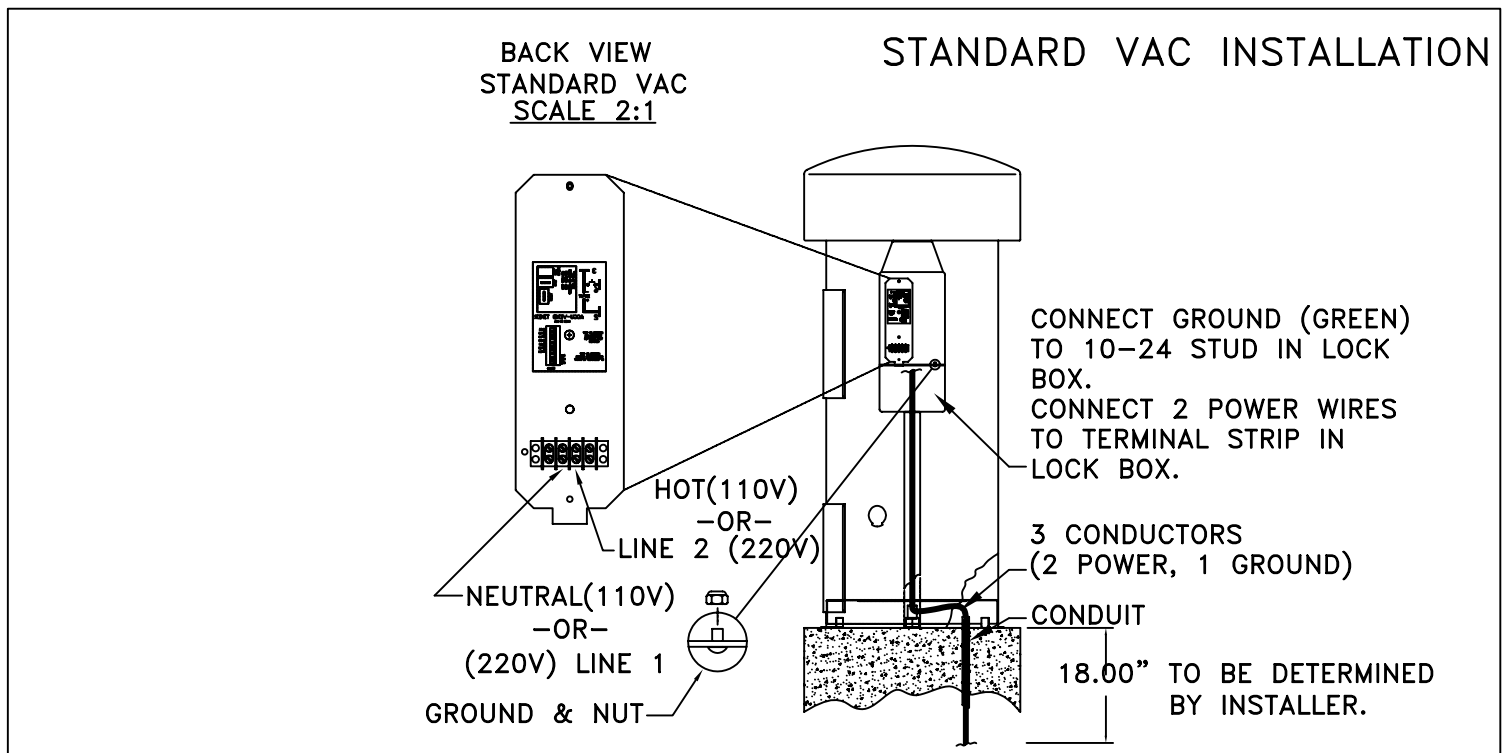
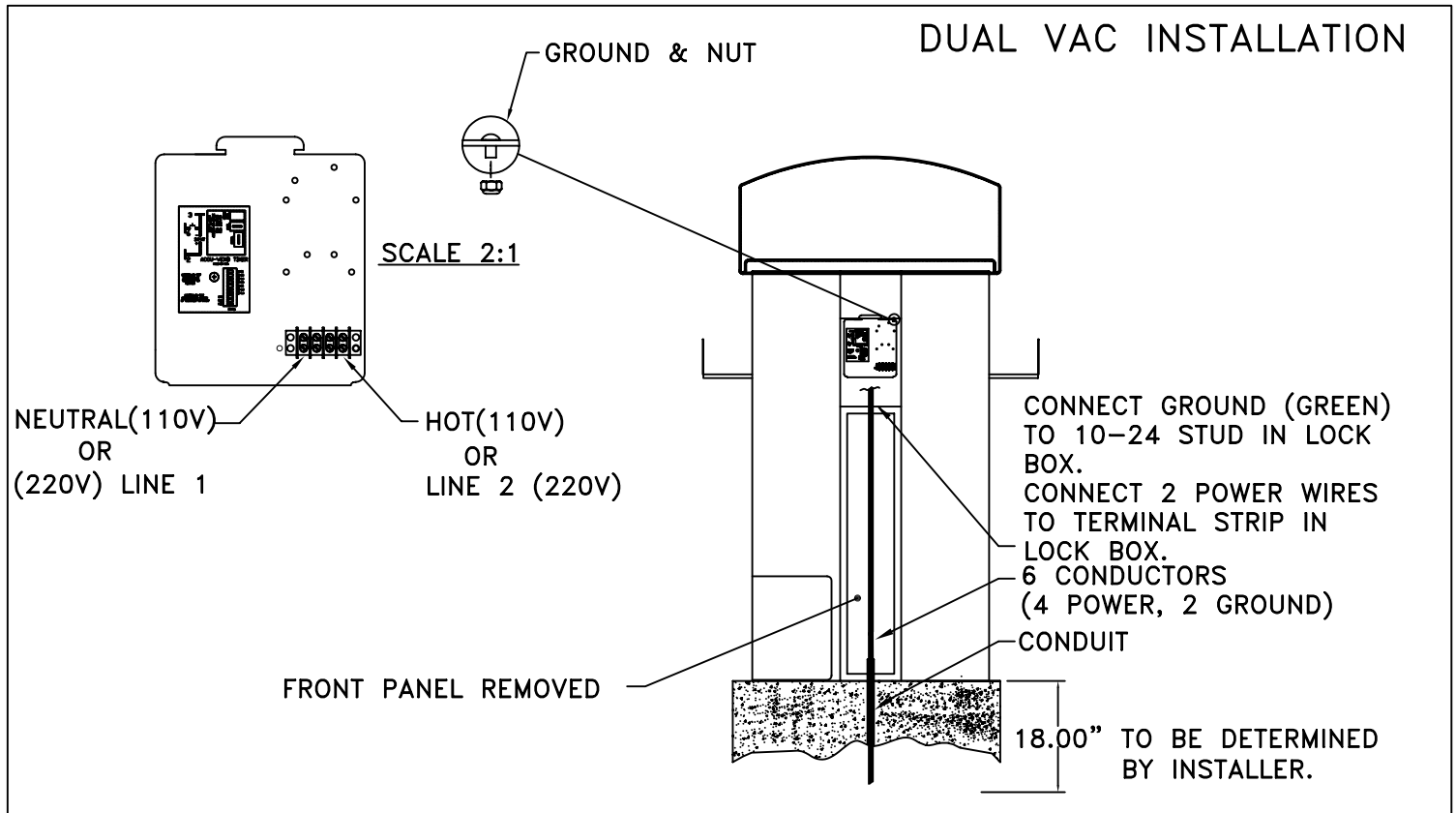


## NOTE:

- 1) ALL DIMENSIONS ARE IN INCHES.
- 2) STUD SIZE 3/8-16UNC x 1"
- 3) 4" MIN CONCRETE AROUND STUD.
- 4) MIN. 18" RECOMMENDED PAD HEIGHT FOR BUMPER CLEARANCE.
- 5) FOR GASOLINE DESPENSING LOCATIONS:
  - A) A MINIMUM OF 18" HIGH PAD ABOVE THE DRIVEWAY AND A MINIMUM. 20 FOOT HORIZONTAL DISTANCE FROM EXTERIOR ENCLOSURE OF ANY GASOLINE DISPENSING PUMP.

# J.E. ADAMS VAC INSTALLATION 2 OF 3

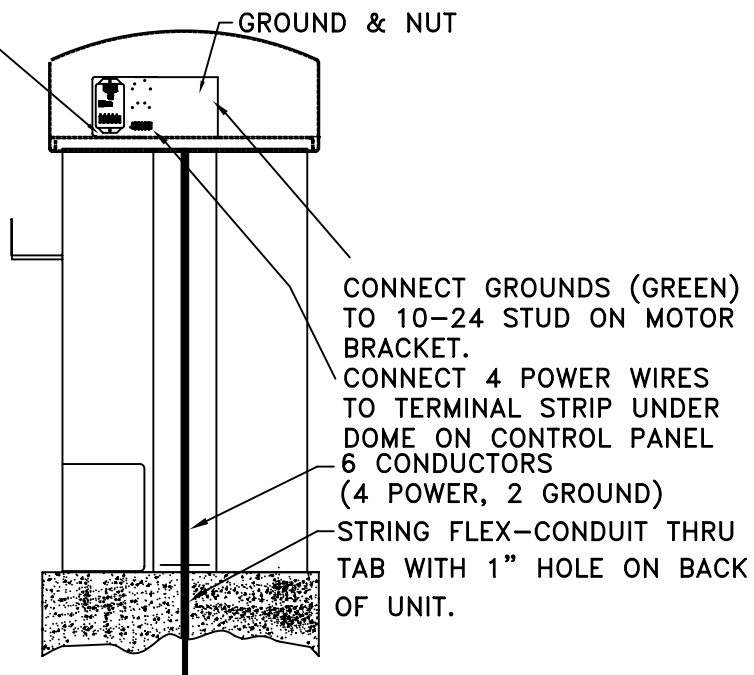
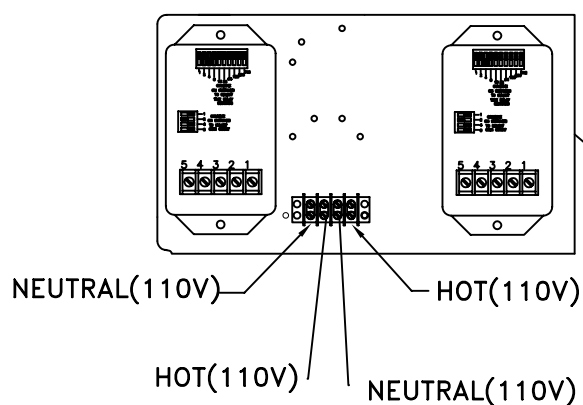
- 1) WE RECOMMEND THAT THE UNIT BE INSTALLED BY A CERTIFIED ELECTRICIAN. THIS WILL INSURE THAT ALL NATIONAL AND LOCAL ELECTRICAL CODES HAVE BEEN ADHERED TO AND CORRECT GAGE OF WIRE HAS BEEN USED BASED ON THE SPECIFIED REQUIREMENTS.
- 2) AFTER ELECTRICAL SERVICE HAS BEEN SUPPLIED CHECK TIMER FOR DESIRED SETTINGS.
- 3) ONCE TIMER HAS BEEN SET UNIT IS NOW READY TO BE POWERED UP AND READY FOR USE.



## J.E. ADAMS VAC INSTALLATION 3 OF 3

- 1) WE RECOMMEND THAT THE UNIT BE INSTALLED BY A CERTIFIED ELECTRICIAN. THIS WILL INSURE THAT ALL NATIONAL AND LOCAL ELECTRICAL CODES HAVE BEEN ADHERED TO AND CORRECT GAGE OF WIRE HAS BEEN USED BASED ON THE SPECIFIED REQUIREMENTS.
- 2) AFTER ELECTRICAL SERVICE HAS BEEN SUPPLIED CHECK TIMER FOR DESIRED SETTINGS.
- 3) ONCE TIMER HAS BEEN SET UNIT IS NOW READY TO BE POWERED UP AND READY FOR USE.

### AIR/VAC AND AIR /WATER/ VAC INSTALLATION



**IMPORTANT NOTE:**  
**AIR/VAC UNIT IS TO BE HOOKED UP USING (2) SEPERATE INCOMING SERVICES. 20 AMP SERVICE FOR THE AIR AND 20 AMP SERVICE FOR THE VAC. IF THE UNIT IS NOT HOOKED UP IN THIS MANNER IT MAY RESULT IN UNIT FAILING. PROBLEMS THAT CAN OCCUR MAY INCLUDE COMPRESSOR FAILURE, TIMER MALFUNCTIONS OR UNIT RUNNING INCONSISTENTLY.**

PART NO.

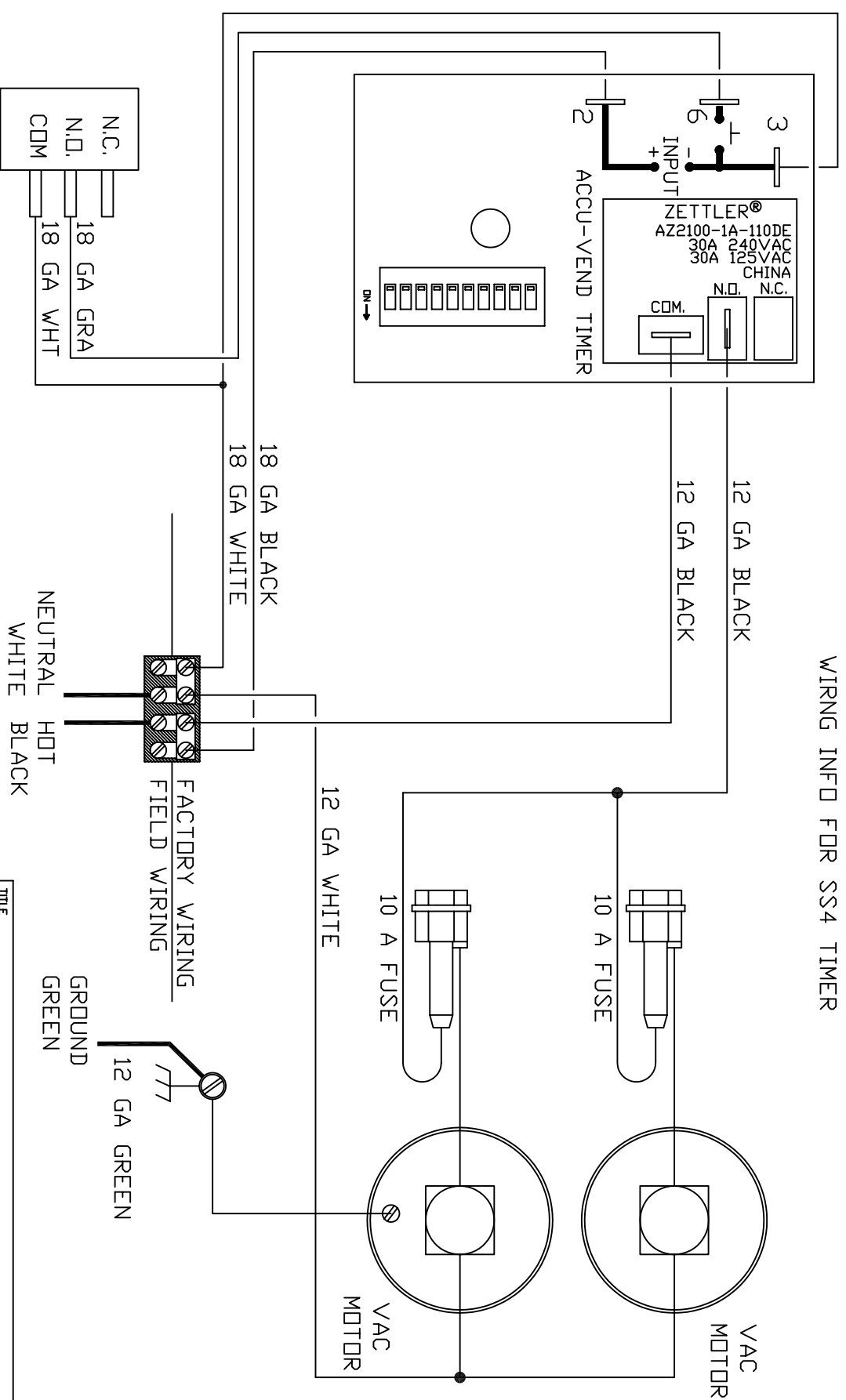
S9200-C

THIS DOCUMENT SHALL NOT BE REPRODUCED NOR SHALL THE INFORMATION THEREIN BE USED BY OR DISCLOSED TO OTHERS EXCEPT AS AUTHORIZED BY J.E. ADAMS INDUSTRIES

BILL OF MATERIAL

ITEM NO.	PART NO.	DESCRIPTION	QTY.
----------	----------	-------------	------

WIRING INFO FOR SS4 TIMER

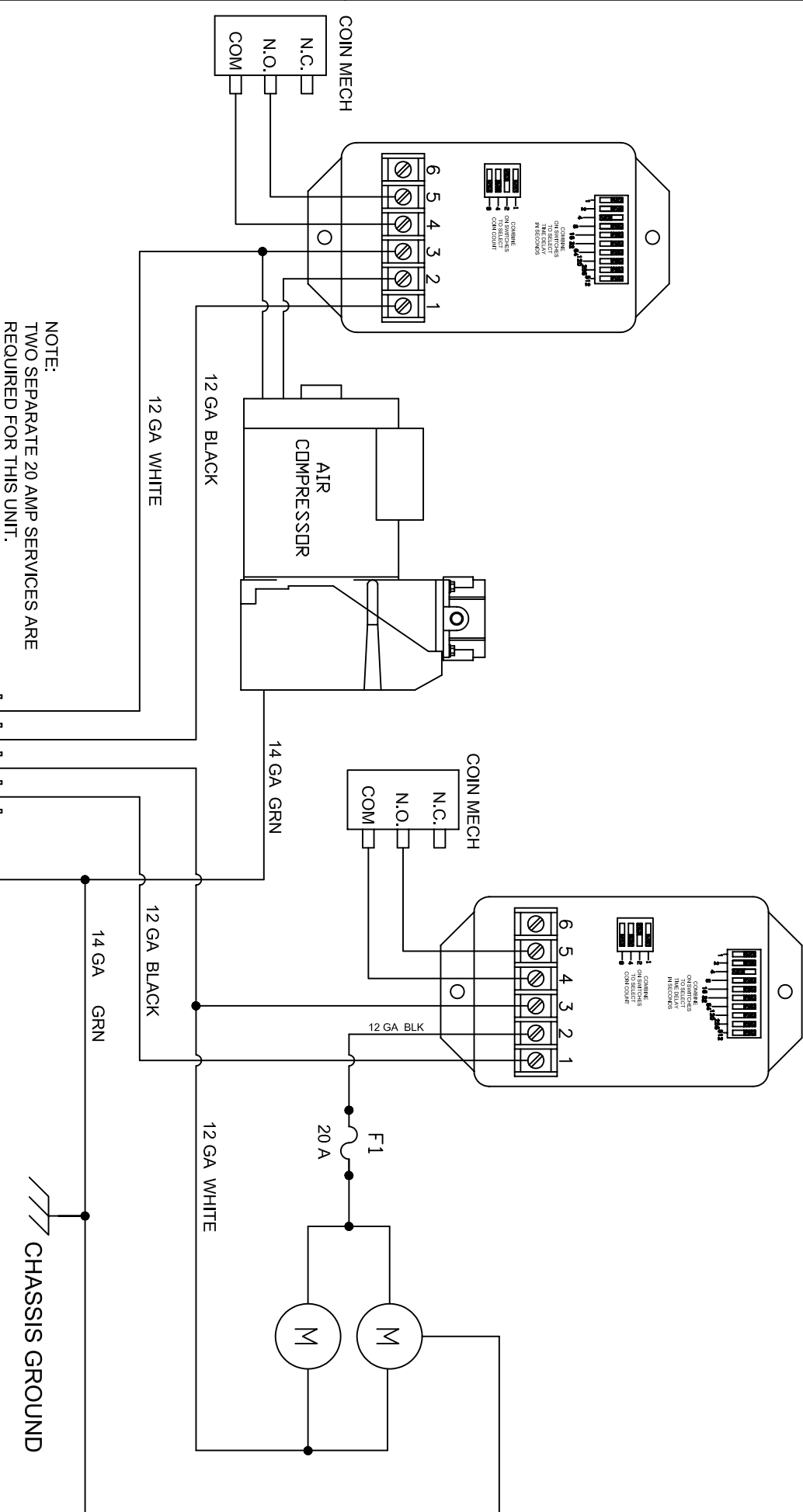


TERMINAL STRIP ON BACK SIDE OF  
TIMER PLATE IN LOCK BDX  
FIELD WIRING MUST COMPLY WITH  
WITH LOCAL AND NATIONAL ELECTRICAL CODES

REV	NO.	DESCRIPTION	DATE	BY	TITLE	SCALE	UNSPECIFIED TOLERANCES	FRACT. $\pm 1/32$	DATE	REL. FOR PROD.	PART NO.	REV.
					SSAC, TIMER	-	CK	2 PL $\pm .020$	4-04		S9200-C	
								3 PL $\pm .010$				
								ANGLE $\pm 1.0^\circ$				



BILL OF MATERIAL		
ITEM NO.	PART NO.	DESCRIPTION
		1



TITLE

9420-1 AIR/VACUUM - INFITEC

SCALE

NONE

UNSPECIFIED TOLERANCES

FRACT.  $\pm 1/32$

2 PL  $\pm .020$

3 PL  $\pm .010$

ANGLE  $\pm 1.0^\circ$

DRAWN BY

RRF

DATE

13 JAN 04

PART NO.

S9420-1-A

REV.

CEADAR RAPIDS, IOWA

J.E. ADAMS INDUSTRIES, LTD.

REV

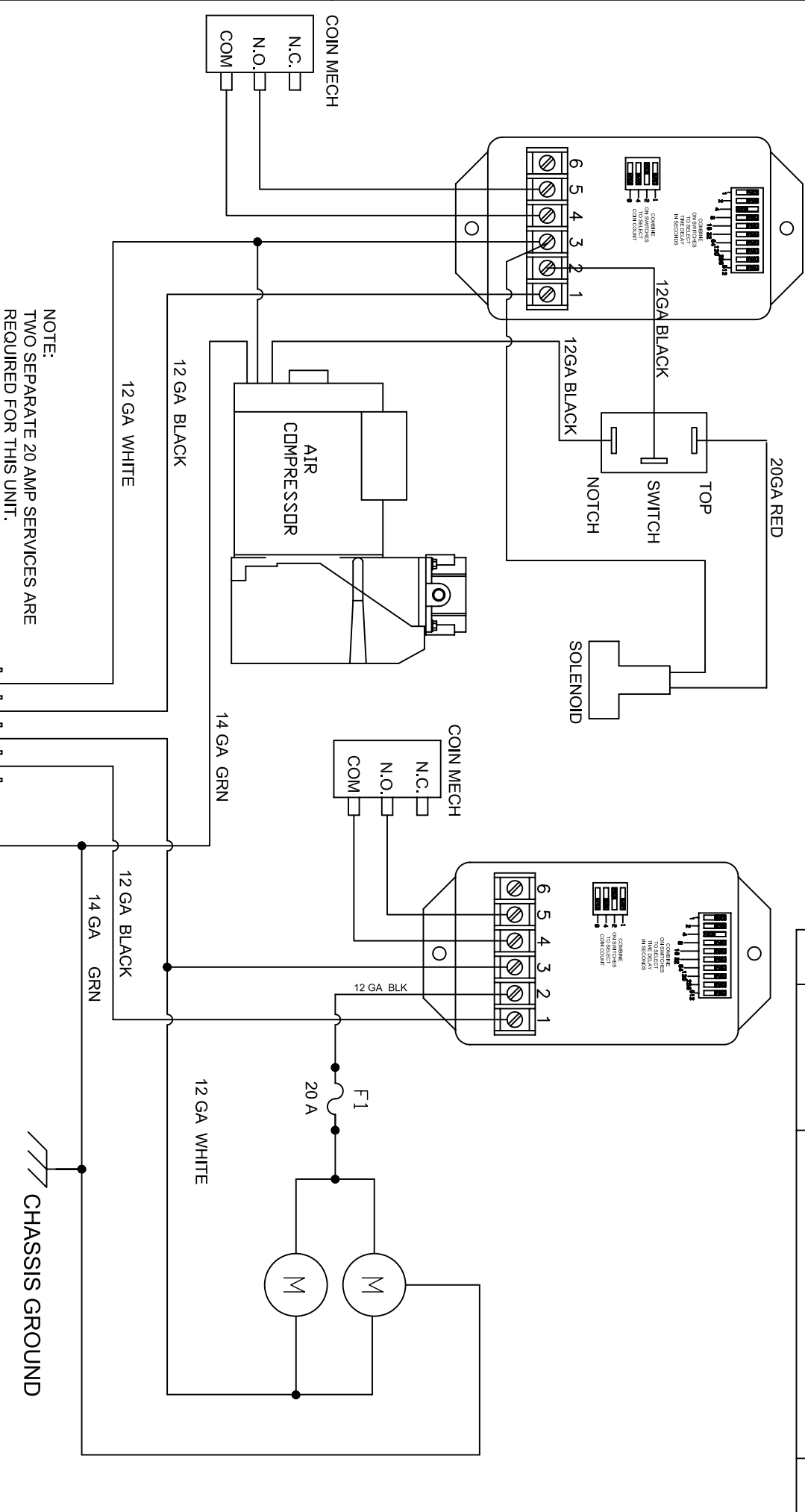
NO.

DESCRIPTION

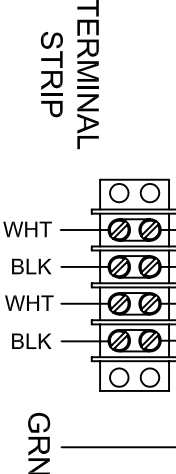
DATE

BY

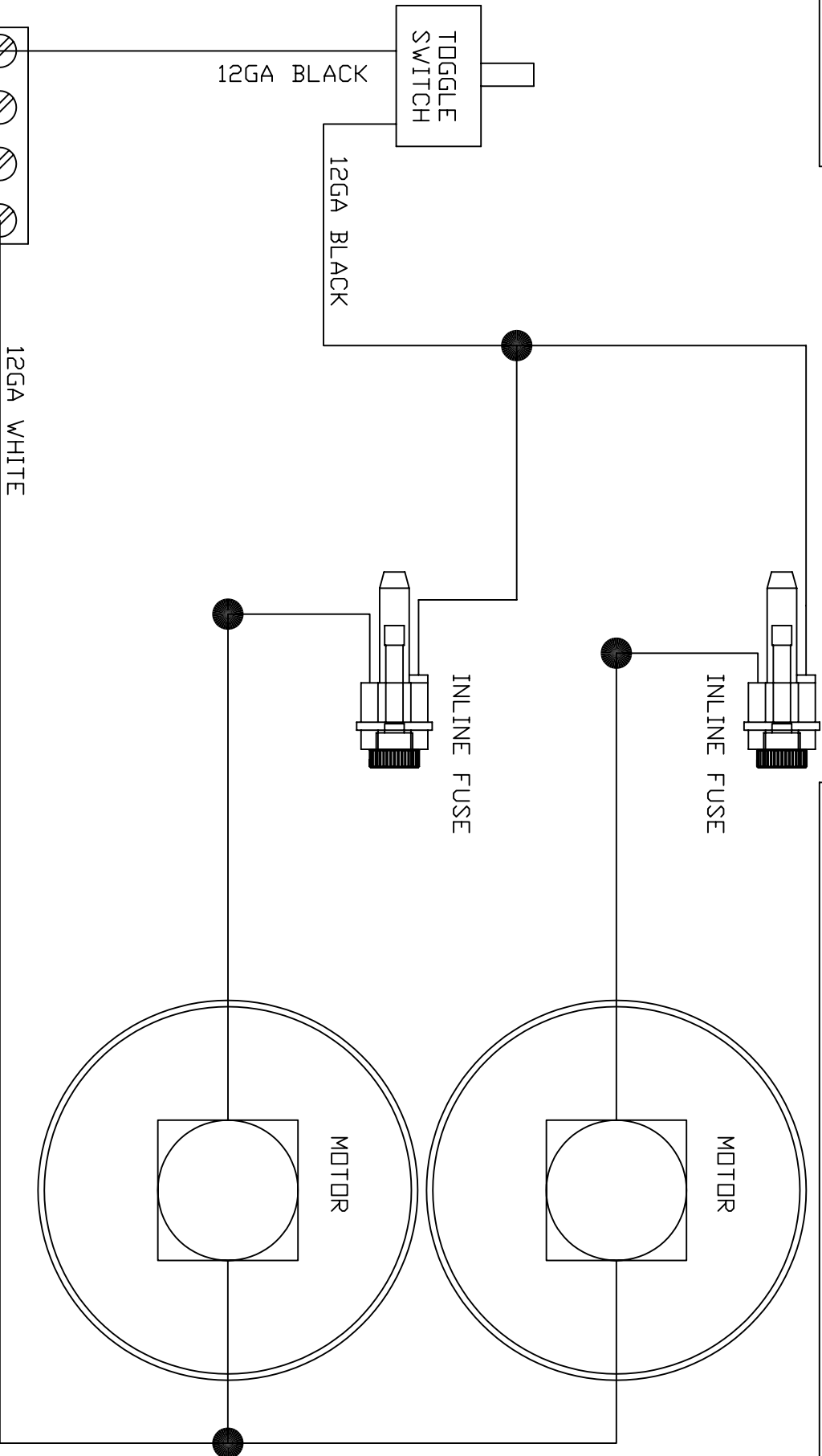
BILL OF MATERIAL		
ITEM NO.	PART NO.	DESCRIPTION
		1



NOTE:  
TWO SEPARATE 20 AMP SERVICES ARE  
REQUIRED FOR THIS UNIT.

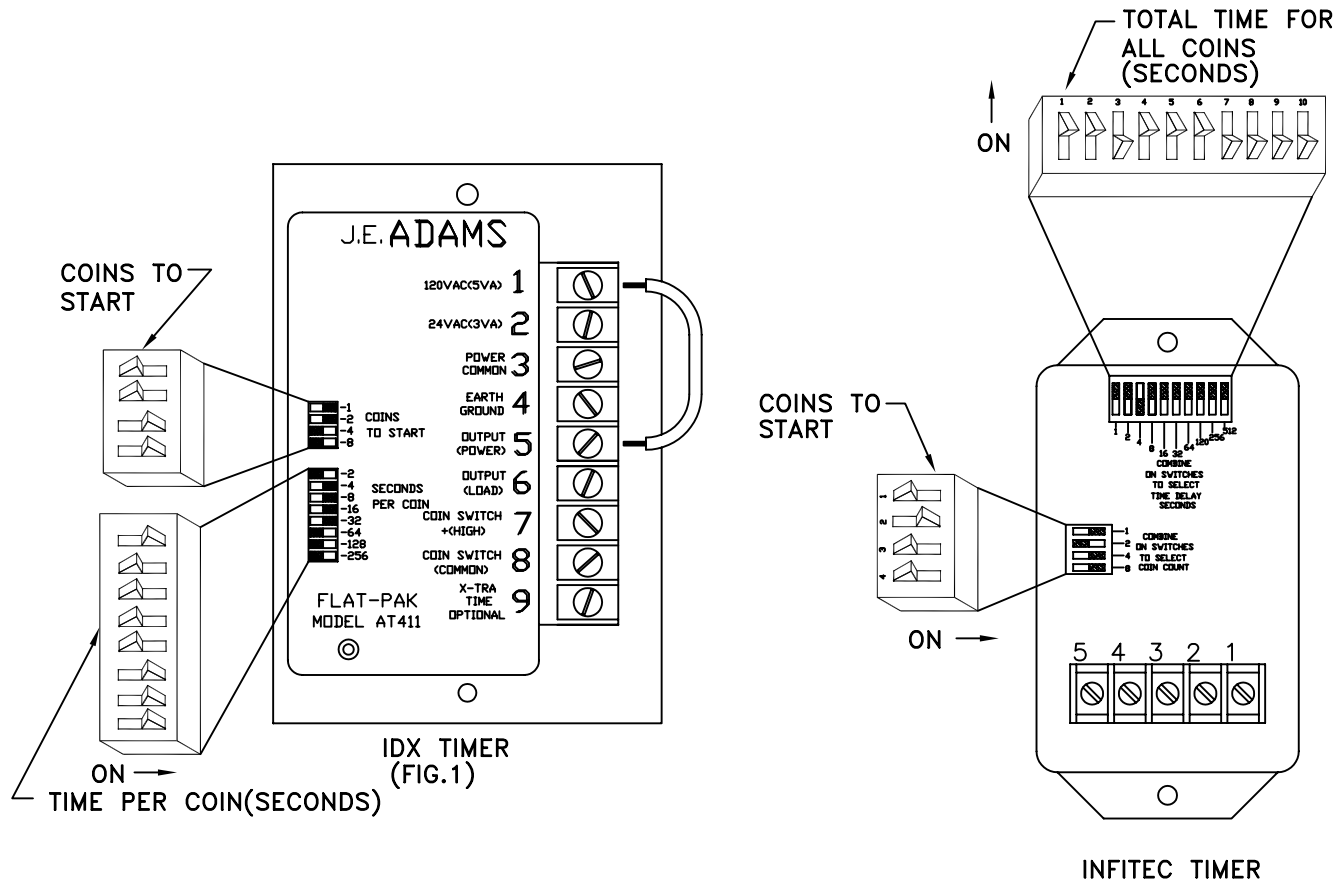


TITLE		
AIR WATER VAC		
SCALE	UNSPECIFIED	DRAWN BY CK
	TOLERANCES	
	FRACT. $\pm 1/32$	
	2 PL $\pm .020$	
DATE	7-04	PART NO. S8648-A
	REL. FOR PROD.	
REV.	NO.	REV.



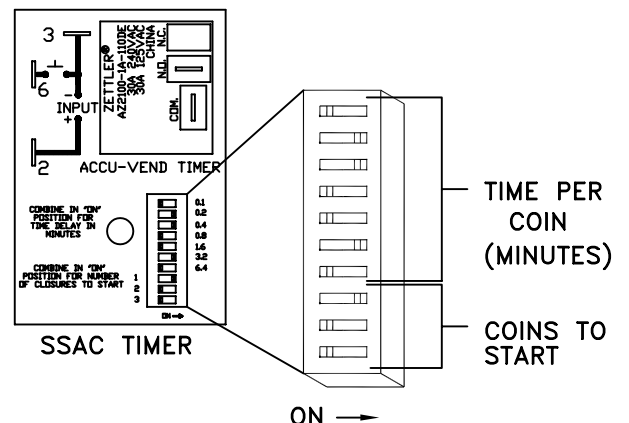
																																																														
REV	NO.	DESCRIPTION			DATE	BY																																																								
<table><tr><td colspan="3">TITLE</td><td colspan="4">2 M- COMMERCIAL ON-OFF TOGGLE</td></tr><tr><td colspan="3">MATERIAL</td><td colspan="4">—</td></tr><tr><td colspan="3">UNSPECIFIED TOLERANCES</td><td colspan="4">SCALE —</td></tr><tr><td colspan="3">DRAWN BY</td><td colspan="4">CK</td></tr><tr><td colspan="3">DATE</td><td colspan="4">5-04</td></tr><tr><td colspan="3">REL. FOR PROD.</td><td colspan="4">—</td></tr><tr><td colspan="3">PART NO.</td><td colspan="4">S8505-A</td></tr><tr><td colspan="3">REV.</td><td colspan="4">—</td></tr></table>							TITLE			2 M- COMMERCIAL ON-OFF TOGGLE				MATERIAL			—				UNSPECIFIED TOLERANCES			SCALE —				DRAWN BY			CK				DATE			5-04				REL. FOR PROD.			—				PART NO.			S8505-A				REV.			—			
TITLE			2 M- COMMERCIAL ON-OFF TOGGLE																																																											
MATERIAL			—																																																											
UNSPECIFIED TOLERANCES			SCALE —																																																											
DRAWN BY			CK																																																											
DATE			5-04																																																											
REL. FOR PROD.			—																																																											
PART NO.			S8505-A																																																											
REV.			—																																																											

# TIMER SETUP

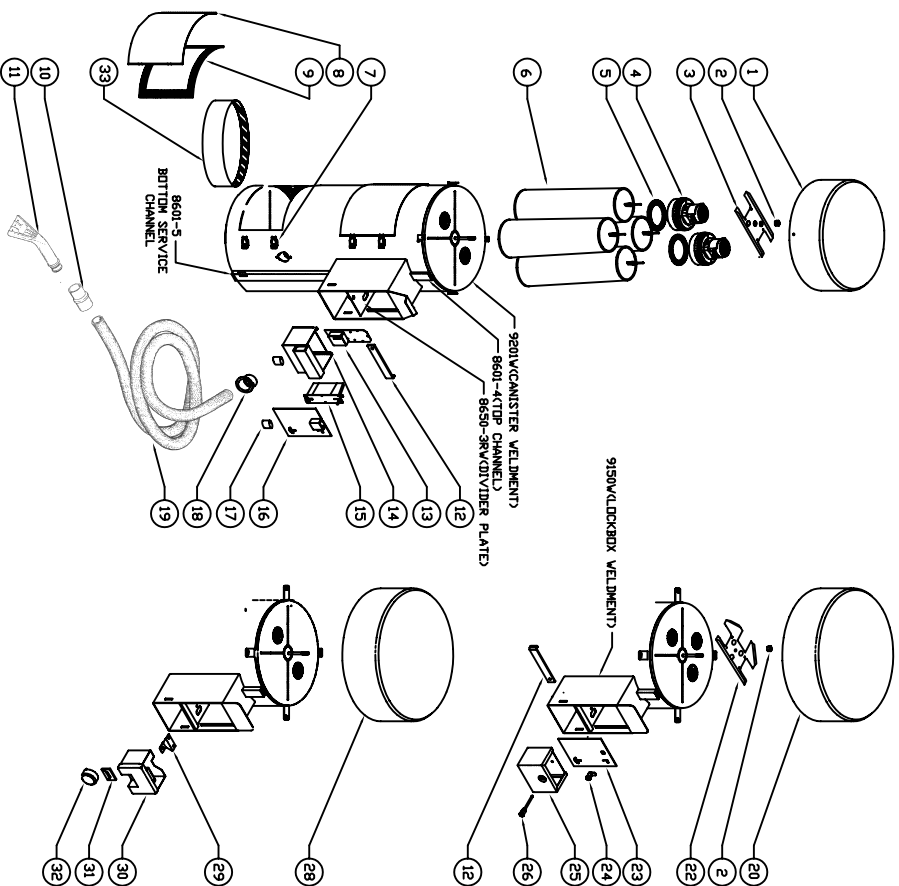


## NOTE:

- 1) SSAC TIMERS "AE" AND "AN" SERIES AND IDX TIMERS ARE BOTH ACCUMULATING TIMERS, MEANING THAT DURING TIMING PERIOD TIME CAN BE EXTENDED PROPORTIONALLY BY ADDING MORE COINS. SSAC TIMERS "SE" AND "SN" SERIES ARE NON-ACCUMULATING.
- 2) IF APPLICABLE: "OPEN" MEANS "OFF" FOR COIN COUNT AND TIME SETTING (INFITEC TIMERS).
- 3) COIN COUNT AND TIME SETTINGS ARE DETERMINED BY ADDING THE VALUES OF ALL SWITCHES SET TO "ON". FOR EXAMPLE FIG. 1 IS SET FOR 3 COINS TO START AND TIME IS SET FOR 60 SECONDS PER COIN FOR A TOTAL OF 180 SECONDS.

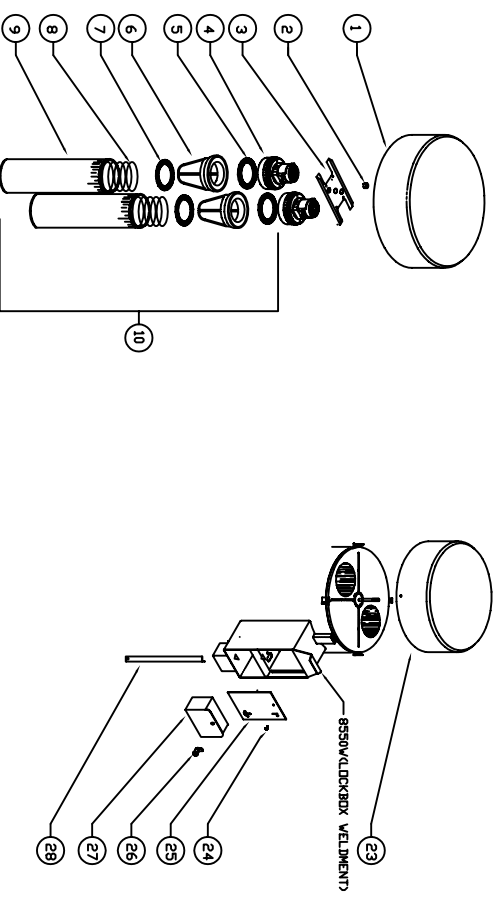


J.E. ADAMS 2 DOOR VAC'S



1)	8101	STAINLESS DOME, ECOND/VAC	172)	8638	PIN LOCK
2)	5603011	NUT, MOTOR MOUNT	18)	8615-7	INLET TUBE
3)	8051G	2 MOTOR BRACKET	19)	2036	2" x 15" BLACK VAC HOSE
4)	8055	VAC MOTOR, AMTEK	20)	8306	PLASTIC DOME 24"
5)	8057	MOTOR GASKET	21)	8051-3M	3 MOTOR BRACKET
6)	8076	FILTER BAG ASSY	22)	8952W	FACEPLATE, CAM LOCK
7)	8153-1	LATCH, CLEANOUT DOOR	23)	8953	CAM LOCK, AND KEY, MEDIO
8)	8159	DOOR GASKET	24)	6124	CAM LOCK AND KEY, FORT(ECOND)
9)	8615-SV	CLEANOUT DOOR	25)	8954W	CAM BOX, SCREW LOCK
10)	8991	CLUF	26)	8955	SCREW LOCK AND KEY, MEDIO
11)	2056-BLACK	BLACK CLAY NOZZLE		6128	SCREW LOCK AND KEY, FORT(ECOND)
12)	8206	LOCK BAR (OPTIONAL)	28)	8305	STAINLESS DOME
13)	8715S34	SSAC TIMER	29)	9114	LOCK HASP, BOLT-DN
14)	8204RV	COIN BOX, PIN LOCK	30)	9113W	COIN BOX, AMERICAN 2000 LOCK
15)	8149	INDEX COIN ACCEPTOR	31)	8928	PLASTIC SPACER, AMERICAN 2000 LOCK
16)	8219V	FACEPLATE, RIGHT, LOCK	32)	8920-1	AMERICAN 2000 LOCK

J.E. ADAMS SINGLE DOOR VAC'S



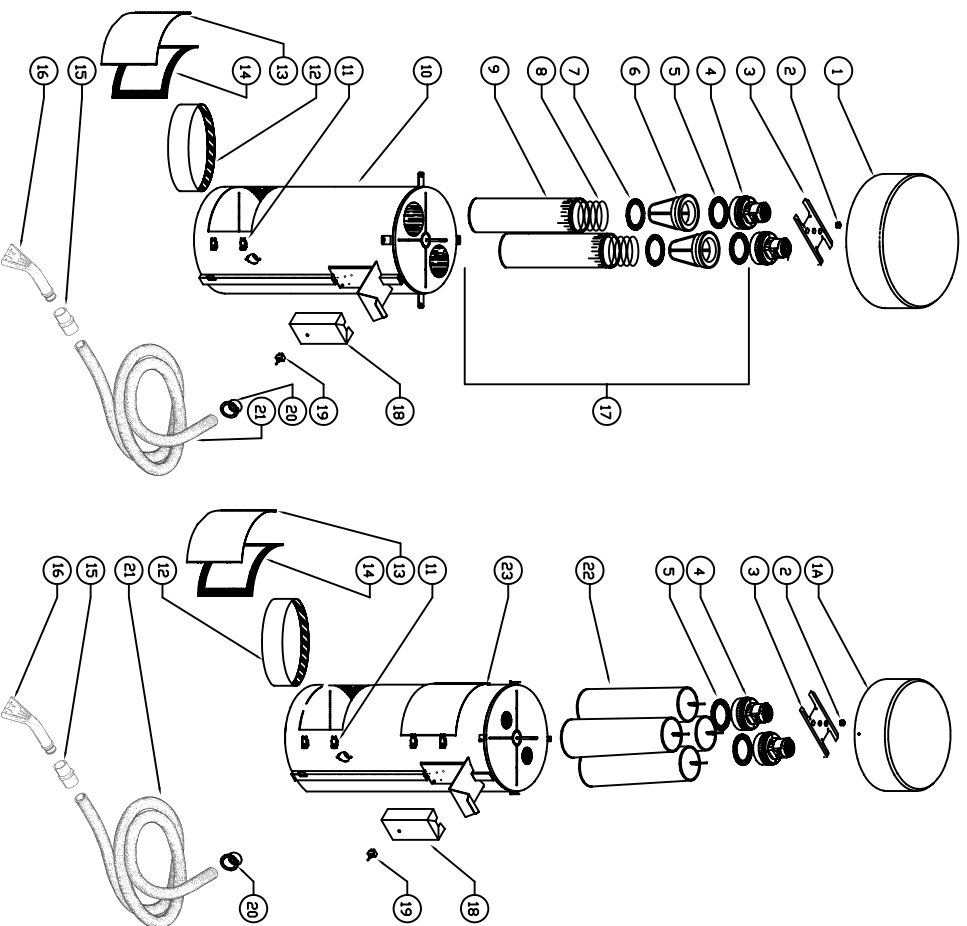
1)	8305	STAINLESS DOME, LARGE
2)	5603011	NUT, MOTOR MOUNT
3)	80516	2 MOTOR BRACKET
4)	8055	VAC MOTOR, AMETEK
5)	8057	MOTOR GASKET
6)	8060	MOTOR BUSHING
7)	8063	BUSHING GASKET
8)	8075	SPRING
9)	8072	FILTER BAG
10)	8079	FILTER BAG ASSY
11)	8153-1	LATCH, CLEANOUT DDDR
12)	8159	DDDR GASKET
13)	8615-5W	CLEANOUT DDDR
14)	2091	CUFF
15)	2056- BLACK	CLAW NOZZLE, BLACK
16)	8712SS4	SSAC TIMER
17)	8204RW	COIN BOX, PINLOCK
18)	8149	INDEX COIN ACCEPTOR
19)	8211W	FACEPLATE, RIGHT PIN
20)	8638	PIN LOCK
21)	8615-7	INLET TUBE
22)	2036	2" X 15" BLACK VAC HOSE
23)	8101	STAINLESS DOME, ECOND
24)	8132	FACEPLATE FASTENER
25)	8511R	FACEPLATE
26)	8138	CAM LOCK
27)	8520V	COIN BOX
28)	8525	LOCK BAR
29)	8559	CLEANOUT BAG (OPTIONAL)
30)	8206	LOCK BAR (OPTIONAL)

PARTS NOT SHOWN ON DRAWING

8173	DECAL	DEPOSIT	QUARTERS	SLOWLY
8423-1	DECAL	SILVER	TDOUCH	CANISTER
8423-2	DECAL	DOME	DECAL	
8429-1	DECAL	HANG	HOSE	HERE
8449-1	DECAL	HERE		
8450	DECAL			

8429-3	DECAL, \$.50
8307	MTG. KIT
8751	WARNING DECAL
B5996-010	10 AMP FUSE
B5997-001	FUSE HOLDER

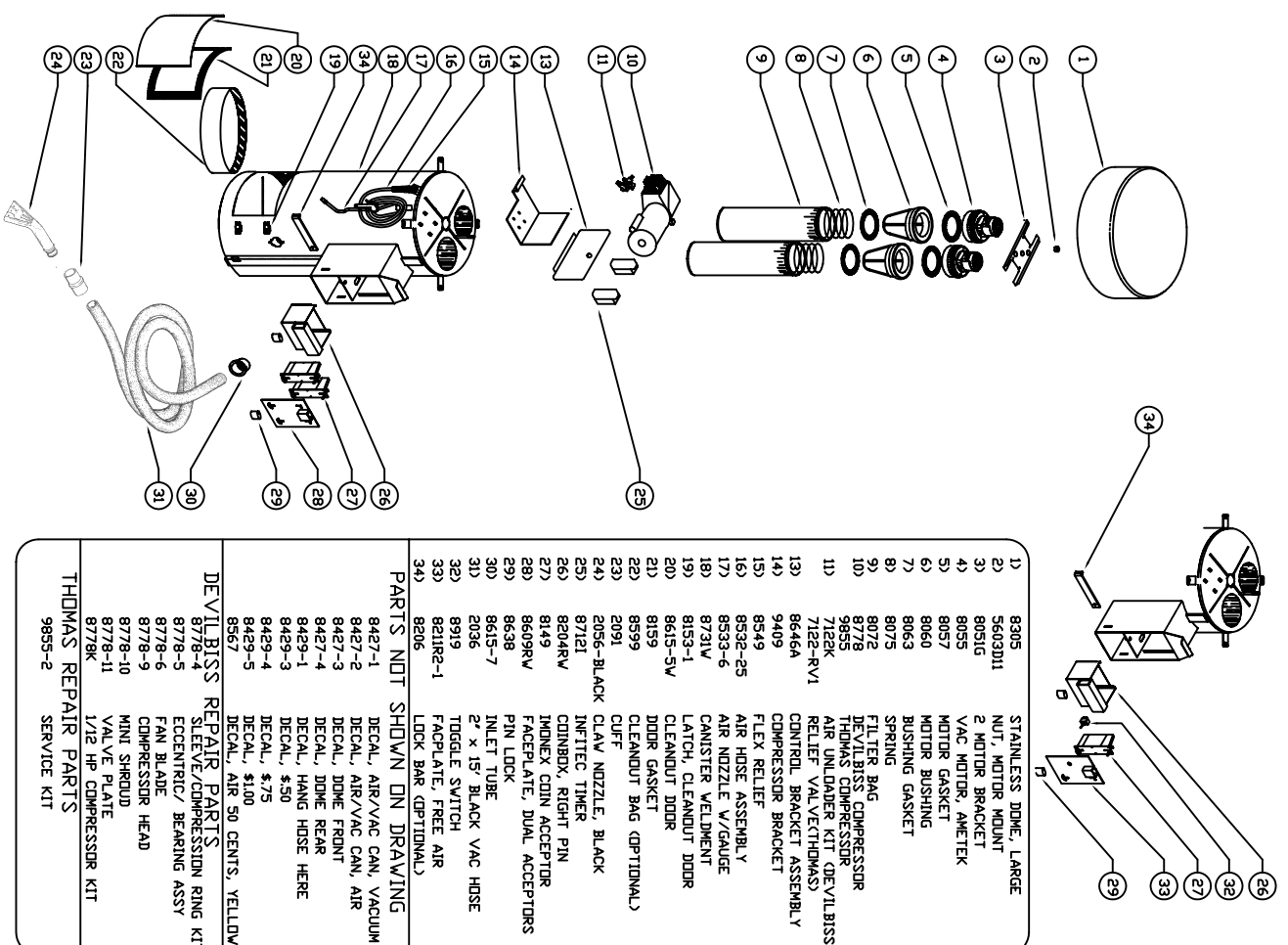
# J.E. ADAMS COMMERCIAL VAC'S



1)	8305	STAINLESS DOME, LARGE	12)	8599	CLEANOUT BAG (OPTIONAL)
1A)	8101	STAINLESS DOME, ECNDMD	13)	8615-SV	CLEANOUT DOOR
2)	5603D11	NUT, MOTOR MOUNT	14)	8159	DOOR GASKET
3)	8051G	2 MOTOR BRACKET	15)	2091	CUFF
4)	8055	VAC MOTOR, AMETEK	16)	2056-BLACK	CLAW NOZZLE, BLACK
5)	8057	MOTOR GASKET	17)	8079	FILTER BAG ASSEMBLY
6)	8060	MOTOR BUSHING	18)	8505-1	COVER, CONTROL PLATE
7)	8063	BUSHING GASKET	19)	8918	WATERPROOF SWITCH, ON-OFF
8)	8075	FILTER SPRING	20)	8615-7	INLET TUBE
9)	8072	FILTER BAG (2 BAG VACS)	21)	2036	2" x 15' BLACK VAC HOSE
10)	8519W	CANISTER WELDMENT	22)	8076	FILTER BAG (4 BAG VACS)
11)	8153-1	LATCH, CLEANOUT DOOR	23)	9226W	CANISTER WELDMENT

PARTS NOT SHOWN ON DRAWING  
8423-1 DECAL, SILVER TOUCH CANISTER  
8423-2 DECAL, VACUUM DOME  
8429-1 DECAL, HANG HOSE HERE

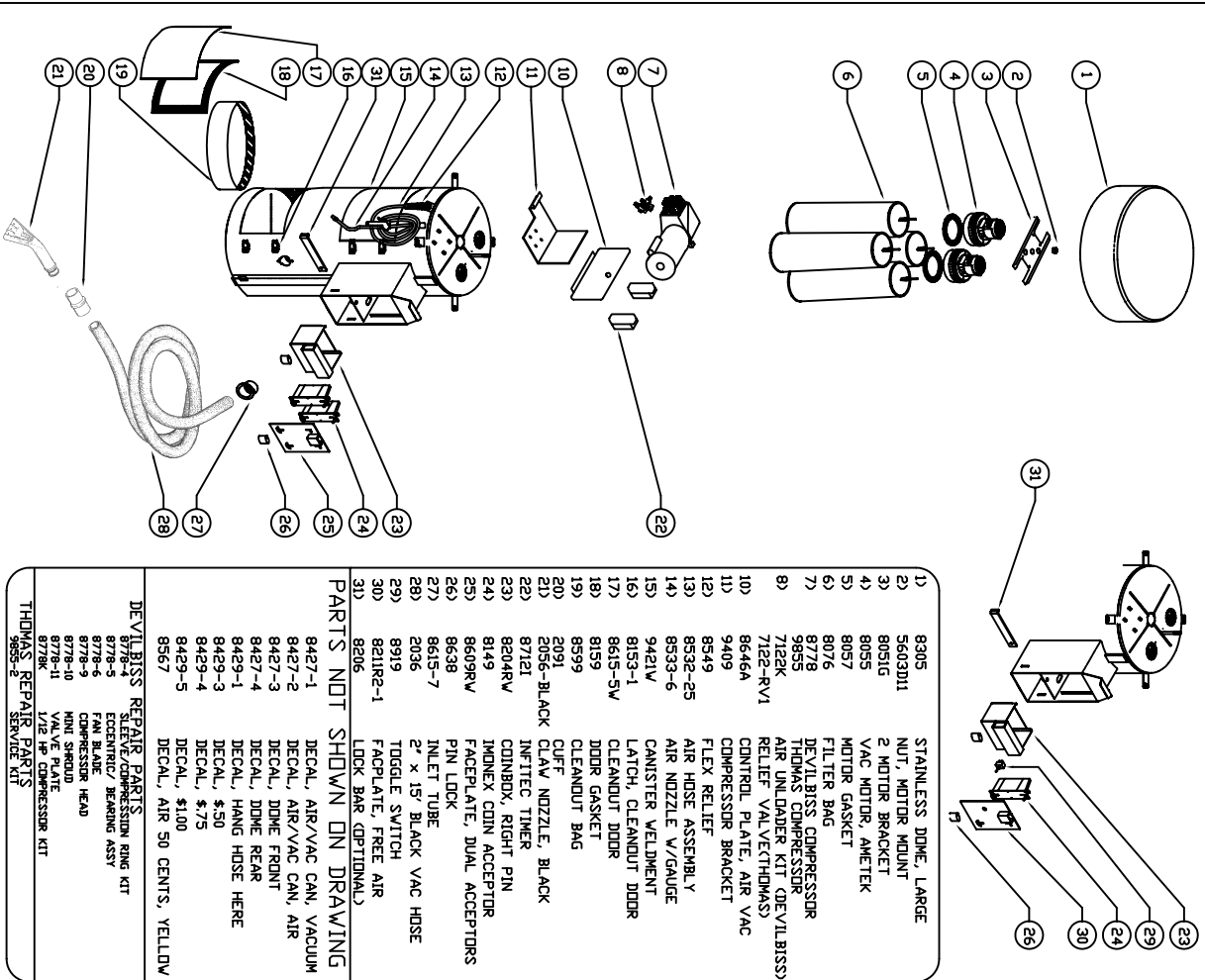
# J.E. ADAMS AIR-VAC SINGLE DOOR



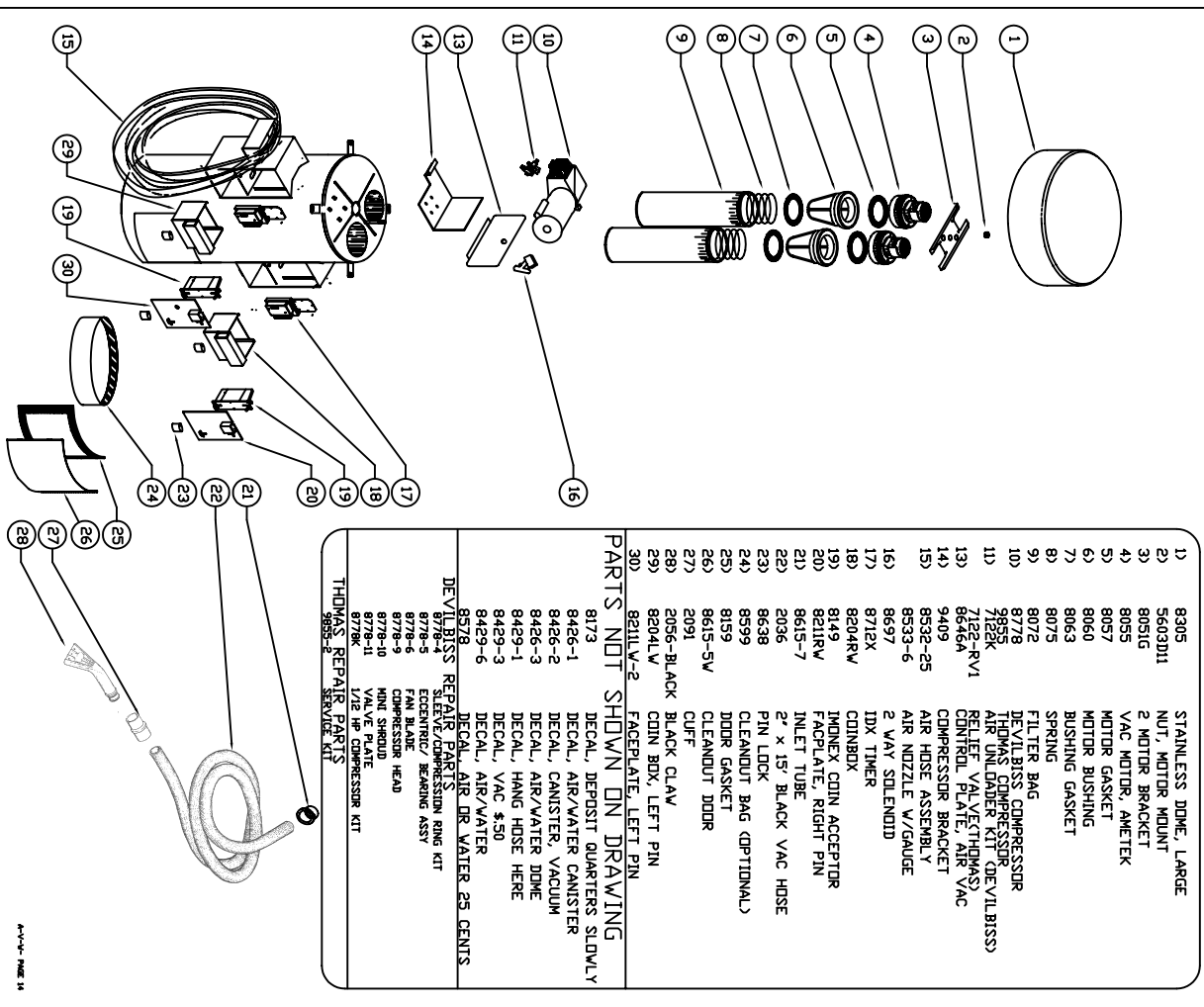
1)	8305	STAINLESS DOME, LARGE	12)	8599	CLEANOUT BAG (OPTIONAL)
2)	5603D11	NUT, MOTOR MOUNT	13)	8615-SV	CLEANOUT DOOR
3)	8051G	2 MOTOR BRACKET	14)	8159	DOOR GASKET
4)	8055	VAC MOTOR, AMETEK	15)	2091	CUFF
5)	8057	MOTOR GASKET	16)	2056-BLACK	CLAW NOZZLE, BLACK
6)	8060	MOTOR BUSHING	17)	8079	FILTER BAG ASSEMBLY
7)	8063	BUSHING GASKET	18)	8505-1	COVER, CONTROL PLATE
8)	8075	FILTER SPRING	19)	8918	WATERPROOF SWITCH, ON-OFF
9)	8072	FILTER BAG (2 BAG VACS)	20)	8615-7	INLET TUBE
10)	8519W	CANISTER WELDMENT	21)	2036	2" x 15' BLACK VAC HOSE
11)	8153-1	LATCH, CLEANOUT DOOR	22)	8076	FILTER BAG (4 BAG VACS)
12)	9226W	CANISTER WELDMENT	23)	9226W	CANISTER WELDMENT
13)	9646A	CONTROL BRACKET ASSEMBLY	24)	87121	INTEC TIMER
14)	9409	COMPRESSOR BRACKET	25)	8204RW	CONDOX, RIGHT PIN
15)	8549	FLEX RELIEF	26)	8149	INDEX CON ACCEPTOR
16)	8532-25	AIR HOSE ASSEMBLY	27)	8609RW	FACEPLATE, DUAL ACCEPTORS
17)	8533-6	AIR NOZZLE W/GAUGE	28)	8638	PIN LOCK
18)	8731W	CANISTER WELDMENT	29)	8615-7	INLET TUBE
19)	8153-1	LATCH, CLEANOUT DOOR	30)	2036	2" x 15' BLACK VAC HOSE
20)	8615-SV	CLEANOUT DOOR	31)	8919	TOGGLE SWITCH
21)	8159	DOOR GASKET	32)	82182-1	FACEPLATE, FREE AIR
22)	8599	CLEANOUT BAG (OPTIONAL)	33)	8206	LOCK BAR (OPTIONAL)
23)	2091	CUFF	34)	8206	LOCK BAR (OPTIONAL)
24)	2056-BLACK	CLAW NOZZLE, BLACK			
25)	87121	INTEC TIMER			
26)	8204RW	CONDOX, RIGHT PIN			
27)	8149	INDEX CON ACCEPTOR			
28)	8609RW	FACEPLATE, DUAL ACCEPTORS			
29)	8638	PIN LOCK			
30)	8615-7	INLET TUBE			
31)	2036	2" x 15' BLACK VAC HOSE			
32)	8919	TOGGLE SWITCH			
33)	82182-1	FACEPLATE, FREE AIR			
34)	8206	LOCK BAR (OPTIONAL)			

PARTS NOT SHOWN ON DRAWING	
8427-1	DECAL, AIR/VAC CAN, VACUUM
8427-2	DECAL, AIR/VAC CAN, AIR
8427-3	DECAL, DOME FRONT
8427-4	DECAL, DOME REAR
8429-1	DECAL, HANG HOSE HERE
8429-3	DECAL, \$50
8429-4	DECAL, \$75
8429-5	DECAL, \$100
8567	DECAL, AIR 50 CENTS, YELLOW
DEVILBISS REPAIR PARTS	
8778-4	SLEEVE/COMPRESSION RING KIT
8778-5	ECCENTRIC BEARING ASSY
8778-6	FAN BLADE
8778-9	COMPRESSOR HEAD
8778-10	MINI SHROUD
8778-11	VALVE PLATE
8778K	1/2 HP COMPRESSOR KIT
THOMAS REPAIR PARTS	
9855-2	SERVICE KIT

# J.E. ADAMS AIR-VAC 2 DOOR

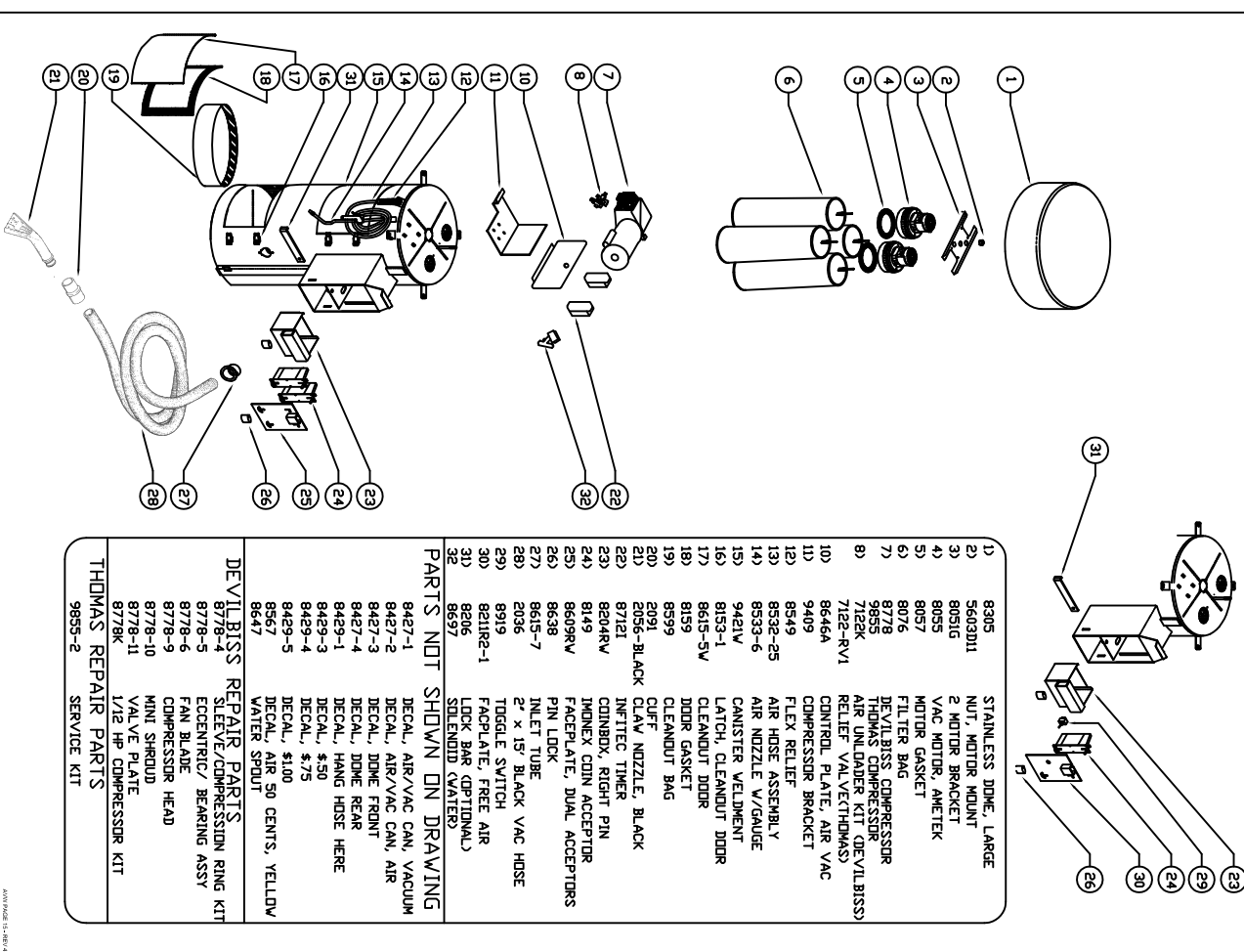
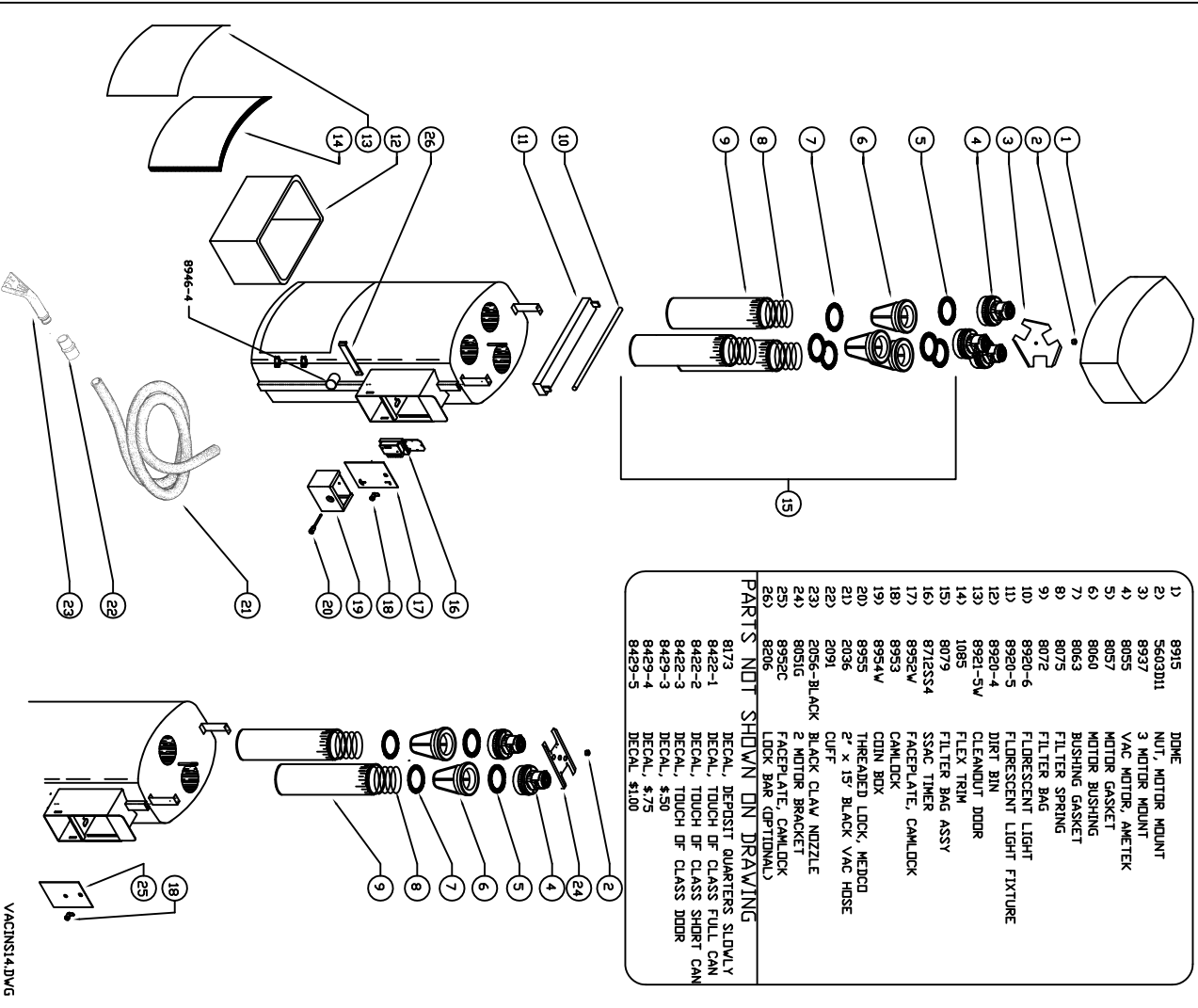


# J.E. ADAMS AIR/VAC/WATER 2 BOX



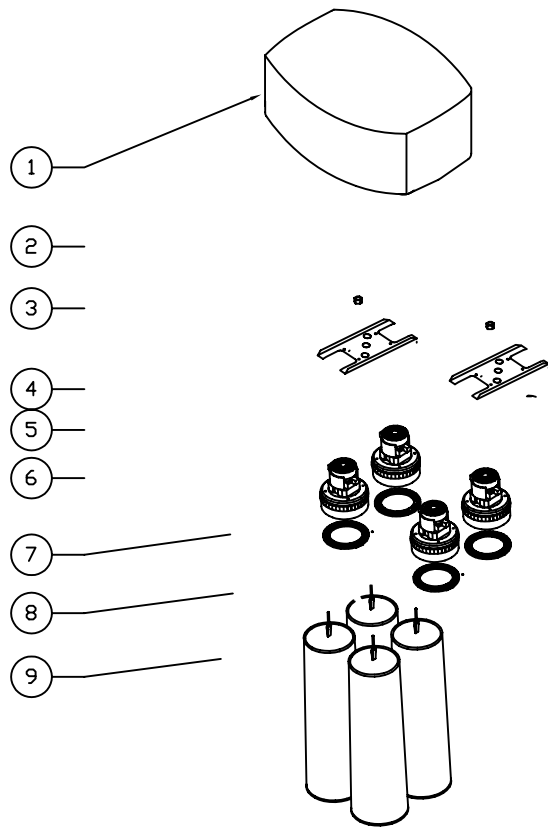
# J.E. ADAMS OVAL VAC

# J.E. ADAMS AIR-WATER-VAC 1 DOOR



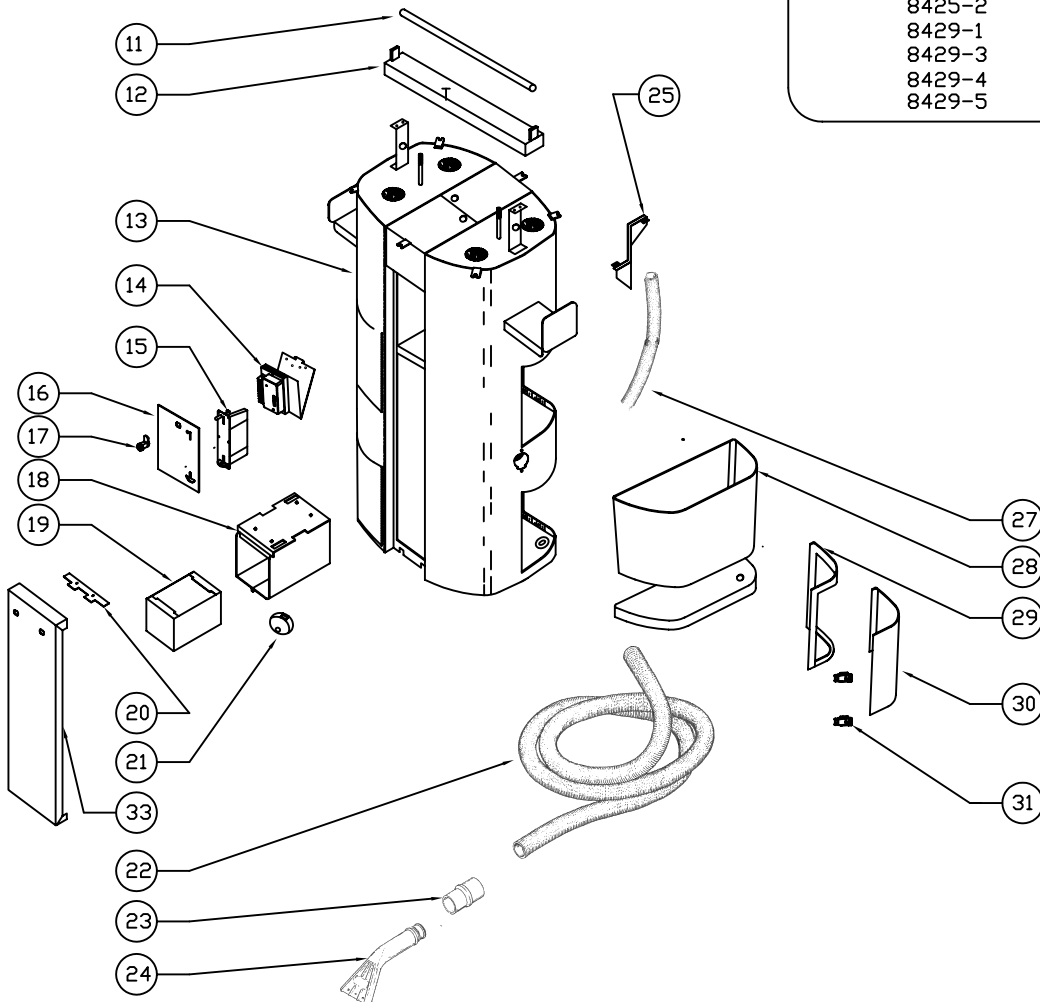


# J.E. ADAMS DUAL VAC



- |     |            |                              |
|-----|------------|------------------------------|
| 1)  | 8915       | OVAL DOME                    |
| 2)  | 5603D11    | NUT, MOTOR MOUNT             |
| 3)  | 8051G      | 2 MOTOR BRACKET              |
| 4)  | 8055       | VAC MOTOR, AMETEK            |
| 5)  | 8057       | MOTOR GASKET                 |
| 9)  | 8076       | FILTER BAG                   |
| 11) | 8920-6     | FLOURESCENT LIGHT TUBE       |
| 12) | 8920-5     | FLOURESCENT LIGHT FIXTURE    |
| 13) | 8961W      | DUAL VAC CANISTER WELDMENT   |
| 14) | 8972       | CONTROL PLATE ASSY.          |
|     | 8712SS4    | SSAC TIMER                   |
| 15) | 8149       | IMONEX COIN ACCEPTOR         |
| 16) | 8965W      | FACEPLATE WELDMENT           |
| 17) | 8953       | CAM LOCK                     |
| 18) | 8968-1W    | COIN BOX ENCLOSURE           |
| 19) | 8968-2W    | COIN BOX                     |
| 20) | 8963       | FACEPLATE SPACER             |
| 21) | 6024       | ABUS LOCK                    |
| 22) | 2036       | 2' X 15' BLACK VAC HOSE      |
| 23) | 2091       | CUFF                         |
| 24) | 2056-BLACK | BLACK CLAW NOZZLE            |
| 25) | 8973W      | COINCHUTE<VAULT READY ONLY>  |
| 27) | 8976       | VAULT HOSE<VAULT READY ONLY> |
| 28) | 8975       | TRASH BIN                    |
| 29) | 8159       | DOOR GASKET                  |
| 30) | 8962-5W    | CLEANOUT DOOR                |
| 31) | 8153-1     | CLEANOUT DOOR LATCH          |
| 33) | 8964-1W    | BOTTOM COVER, DUAL LATCHES   |

- PARTS NOT SHOWN ON DRAWING
- |        |                                |
|--------|--------------------------------|
| 8173   | DECAL, DEPOSIT QUARTERS SLOWLY |
| 8425-1 | DECAL, DUAL CAN LOWER          |
| 8425-2 | DECAL, DUAL CAN UPPER          |
| 8429-1 | DECAL, HANG HOSE HERE          |
| 8429-3 | DECAL, \$.50                   |
| 8429-4 | DECAL, \$.75                   |
| 8429-5 | DECAL, \$1.00                  |





## TROUBLE SHOOTING



**IMPORTANT!** TROUBLESHOOTING SHOULD BE DONE WITH POWER DISCONNECTED IF POSSIBLE. PROCEDURES WITH **! CAUTION!** SIGN REQUIRE THAT POWER BE ON. IF IN DOUBT ABOUT THE SAFETY OF ANY OF THESE PROCEDURES, CONSULT A QUALIFIED ELECTRICIAN OR TECHNICIAN. PROCEDURES MARKED **! CAUTION!** MAY INVOLVE DANGEROUS VOLTAGES.

UNIT WILL NOT START <b>! CAUTION!</b>	<ol style="list-style-type: none"> <li>1) IS THERE POWER TO THE MACHINE? (CHECK VOLTAGE)</li> <li>2) CHECK SERIAL NUMBER TAG TO VERIFY CORRECT POWER SUPPLY HAS BEEN HOOKED TO UNIT.</li> <li>3) IS POWER PRESENT WHEN TIMER IS ACTIVATED? (CHECK VOLTAGE) IF TIMER DOES NOT ACTIVATE BUT POWER IS PRESENT, TIMER MAY NEED REPLACED OR COIN ACCEPTOR MAY NEED TO BE CHECKED.</li> </ol>
TIMER ACTIVATES BUT UNIT NOT RUNNING. <b>! CAUTION!</b>	<ol style="list-style-type: none"> <li>1) CHECK FUSES. ARE THEY BAD, IF SO REPLACE.</li> <li>2) CHECK WIRE CONNECTIONS FROM THE TIMER TO THE MOTORS. DO THEY HAVE A GOOD CONNECTION? ARE THEY CONNECTED?</li> <li>3) CHECK MOTORS, MOTOR MAY HAVE BURNT OUT. MAY NEED TO REMOVE MOTOR AND CHECK IT WITH A DIRECT 110V POWER SOURCE TO VERIFY IT IS WORKING PROPERLY.</li> </ol>
FUSE KEEPS BLOWING?	<ol style="list-style-type: none"> <li>1) CHECK VAC MOTOR. HOW MANY AMPS IS IT PULLING? NORMALLY 1 MOTOR SHOULD PULL BETWEEN 7-8.5 AMPS ROUGHLY. IF MOTOR PULLS MORE THAN SPECIFIED THE MOTOR MAY NEED REPLACED.</li> <li>2) IS THE WIRE CONNECTED TO THE MOTOR MAKING A GOOD CONNECTION?</li> <li>3) LOOK FOR FRAYED WIRES OR EXPOSED WIRING TO MAKE SURE IT IS NOT SHORTING OUT.</li> </ol>
TIMER NOT GIVING ACCURATE TIME.	<ol style="list-style-type: none"> <li>1) TURN ALL SWITCHS TO THE OFF POSTION. ONCE THIS HAS BEEN DONE SET ALL SWITCHS TO THE DESIRED SETTING AND RETRY. TIMER STILL INACCURATE? REPLACE TIMER.</li> </ol>
UNIT RUNS CONTINUOUSLY AND WILL NOT TURN OFF.	<ol style="list-style-type: none"> <li>1) TIMER SHORTED AND MAY NEED REPLACED.</li> <li>2) DOES YOUR UNIT HAVE A RELAY? IF SO CHECK RELAY, ARE THE CONTACTS STUCK OPEN. IF SO REPLACE.</li> </ol>
COMPRESSOR HUMS BUT WILL NOT START <b>(AIR-VAC OR AIR-WATER-VAC UNIT)</b>	<ol style="list-style-type: none"> <li>1) IS THERE PRESSURE IN THE AIR LINE? IF SO BLEED PRESSURE AND RETRY. IF NOT GO TO (2).</li> <li>2) REMOVE UNLOADER FROM THE HEAD AND RETRY. DOES UNIT STILL JUST HUM? IF SO REPLACE COMPRESSOR. IF THIS TAKES CARE OF IT UNLOADER MAY BE DEFECTIVE AND MAY NEED REPLACED.</li> </ol>
UNIT STARTS BUT THERE IS NO AIR PRESSURE <b>(AIR-VAC OR AIR-WATER-VAC UNIT)</b>	<ol style="list-style-type: none"> <li>1) REMOVE AIR CHUCK. IS THERE AIR PRESSURE NOW? IF THERE IS REPLACE AIR CHUCK. IF THERE IS NOT GO TO STEP (2).</li> <li>2) REMOVE HOSE FROM UNLOADER. IS THERE PRESSURE NOW? IF SO AIR HOSE MAY BE CLOGGED UP AND MAY NEED REPLACED. IF UNIT STILL HAS NO AIR PRESSURE GO TO STEP (3).</li> <li>3) REMOVE UNLOADER. IS THERE AIR PRESSURE NOW? IF SO UNLOADER IS BAD AND NEEDS REPLACED. IF NO AIR PRESSURE IS PRESENT NOW, REPLACE COMPRESSOR.</li> </ol>

IF PROBLEMS STILL EXIST AFTER RUNNING THRU THE TROUBLE SHOOTING LIST PLEASE CALL YOUR DISTRIBUTOR FOR FURTHER HELP OR CALL J.E. ADAMS INDUSTRIES. WHEN CALLING PLEASE HAVE THE FOLLOWING INFORMATION READY: YOUR MODEL NUMBER, DATE THE UNIT WAS PURCHASED, DISTRIBUTOR NAME, YOUR COMPANY OR BUSINESS NAME AND A NUMBER YOU CAN BE REACHED AT.

## MAINTENANCE

- 1) SHAKE THE DIRT FROM THE FILTER BAGS. WE RECOMMEND DOING THIS WEEKLY AND IF POSSIBLE MACHINE WASHING THE BAGS MONTHLY.
- 2) REMOVE DIRT AND DEBRIS FROM THE CANISTER AS NEEDED.
- 3) CHECK VAC HOSE FOR SIGNS OF WEAR AND REPLACE AS NEEDED.
- 4) CLEAN THE OUTSIDE OF CANISTER WITH A STAINLESS STEEL POLISH. DO NOT USE ANY ABRASIVE CLEANERS, STEEL WOOL OR ANY KIND OF BRUSH TO CLEAN CANISTER. THIS MAY DAMAGE THE FINISH OF THE CANISTER.

